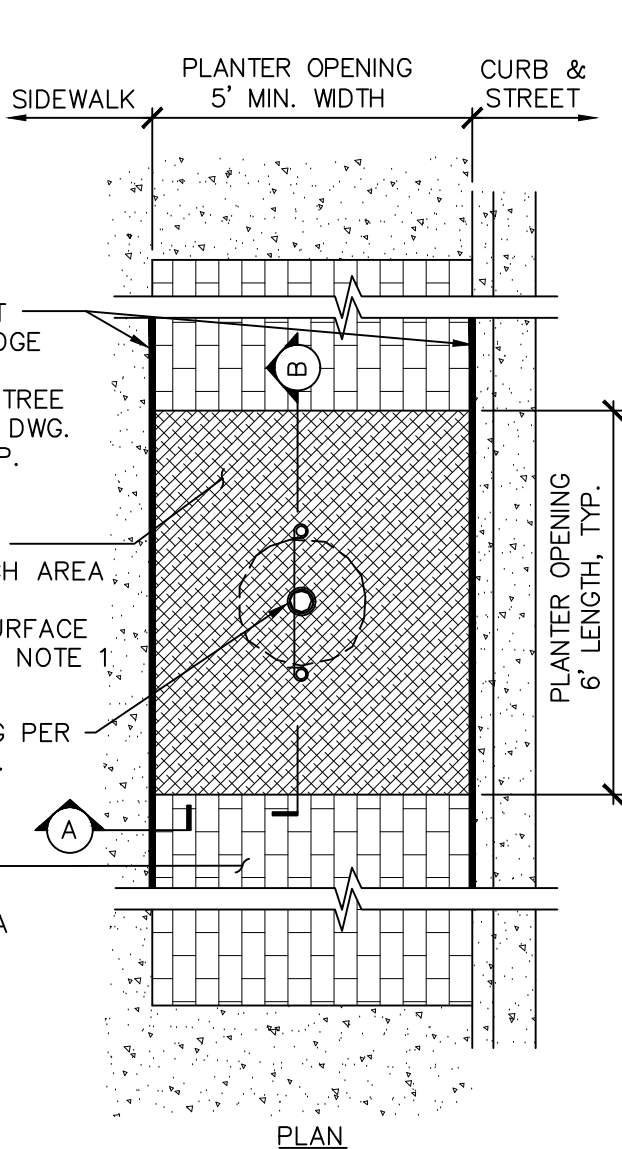


10' LONG ROOT BARRIER AT EDGE OF PLANTER CENTERED ON TREE PER COB STD. DWG. SW-130-1, TYP.

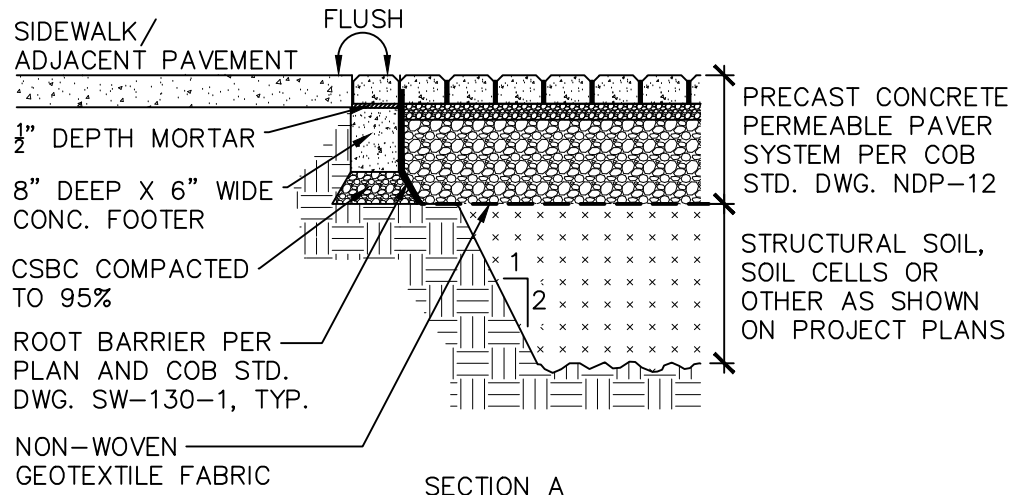
TREE PIT WITH ORGANIC MULCH AREA OR APPROVED PERMEABLE SURFACE MATERIAL, SEE NOTE 1.

TREE PLANTING PER COB STD. DWG. PK-IM-07B

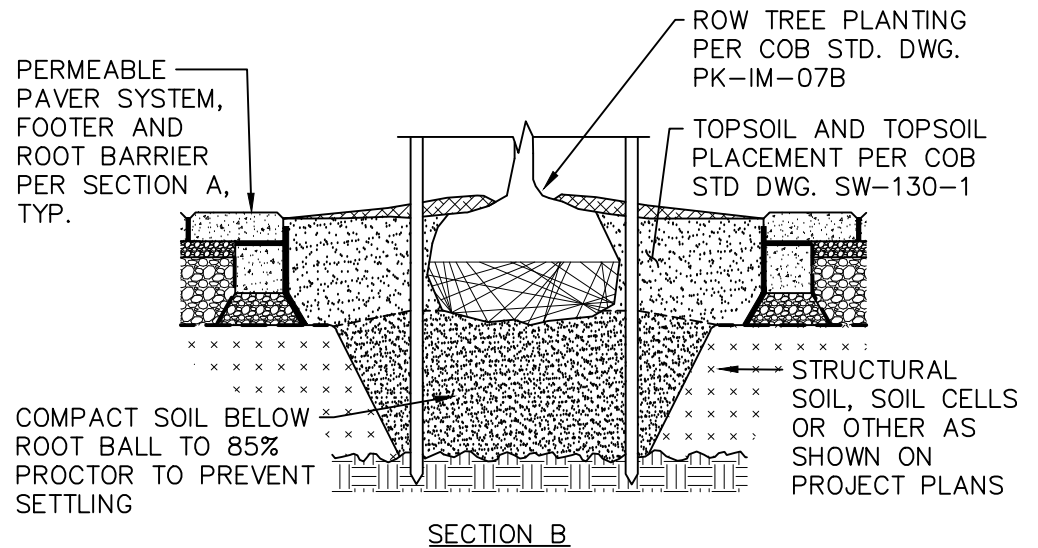
PERMEABLE PAVER SYSTEM PER SECTION A



PLAN



SECTION A



SECTION B

NOTES:

1. FLEXIBLE POROUS SURFACING PER COB STD. DWG. PK-IM-07C IS ALSO AN ALLOWED PERVIOUS SURFACE.



City of Bellevue

TITLE:

PLANTING - R.O.W. TREE IN CONTINUOUS TRENCH WITH PERVIOUS SURFACING

| | |
|----------------|-----------|
| DRAWING #: | PK-IM-07D |
| SCALE: | N.T.S. |
| REVISION DATE: | 08-2020 |
| DEPARTMENT: | PARKS |



Standard detail revised with support of King Conservation District