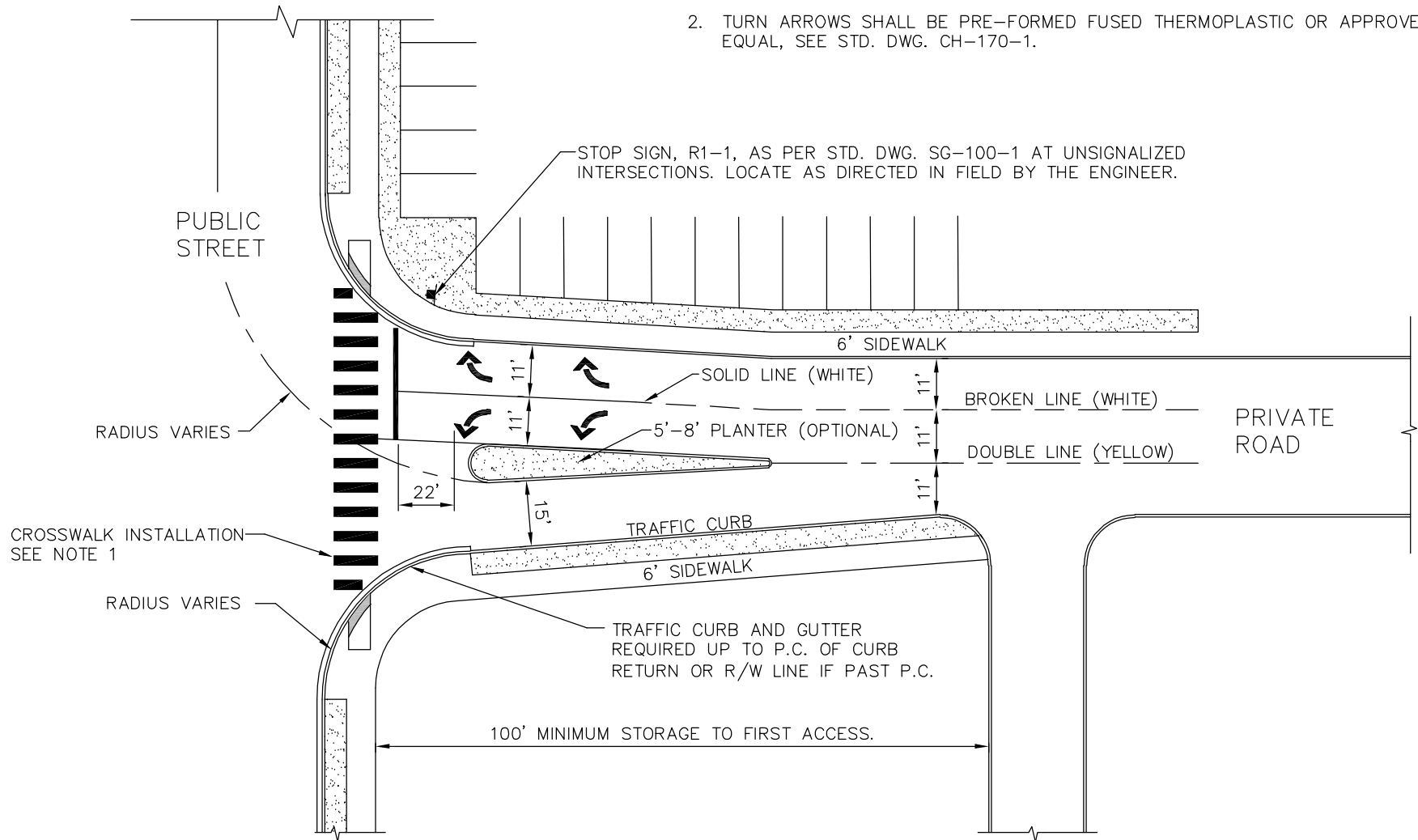


NOTES:

1. CROSSWALK SHALL BE HOT APPLIED THERMOPLASTIC OR APPROVED EQUAL, SEE STD. DWG. CW-100-1.
2. TURN ARROWS SHALL BE PRE-FORMED FUSED THERMOPLASTIC OR APPROVED EQUAL, SEE STD. DWG. CH-170-1.



PRIVATE COMMERCIAL ROAD/PUBLIC STREET INTERSECTION

DRAWING NUMBER	CH-290-1
SCALE	NONE
REVISION DATE	2/22
DEPARTMENT	TRANS