

City of Bellevue Light Rail CAC

South Bellevue Operational Noise Mitigation

- Types of barriers
- Heights and locations

Operational Mitigations Measures

Acoustic panels on elevated guide ways

6-8ft high

Sound attenuating composition

Stainless steel or aluminum



Sound walls

8-14 feet above top of rail

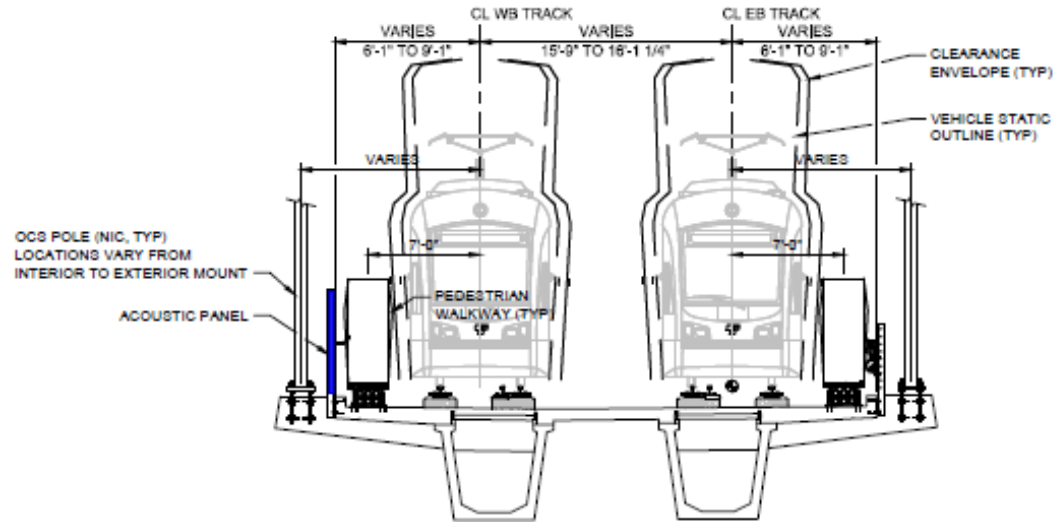
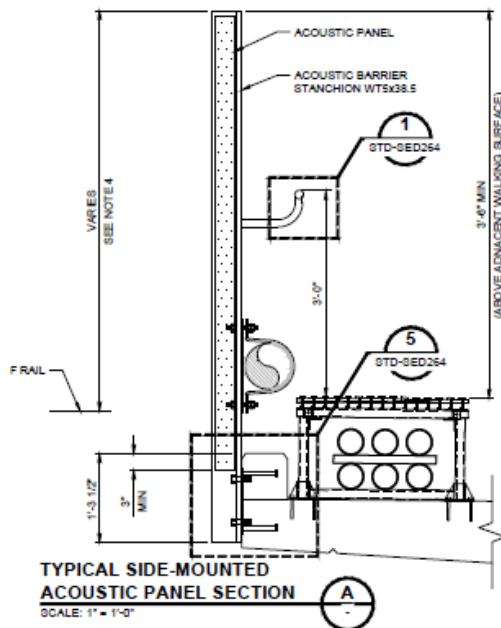
Reinforced concrete



Reduced PA volume during
nighttime hours

Barrier Details

Barrier detail

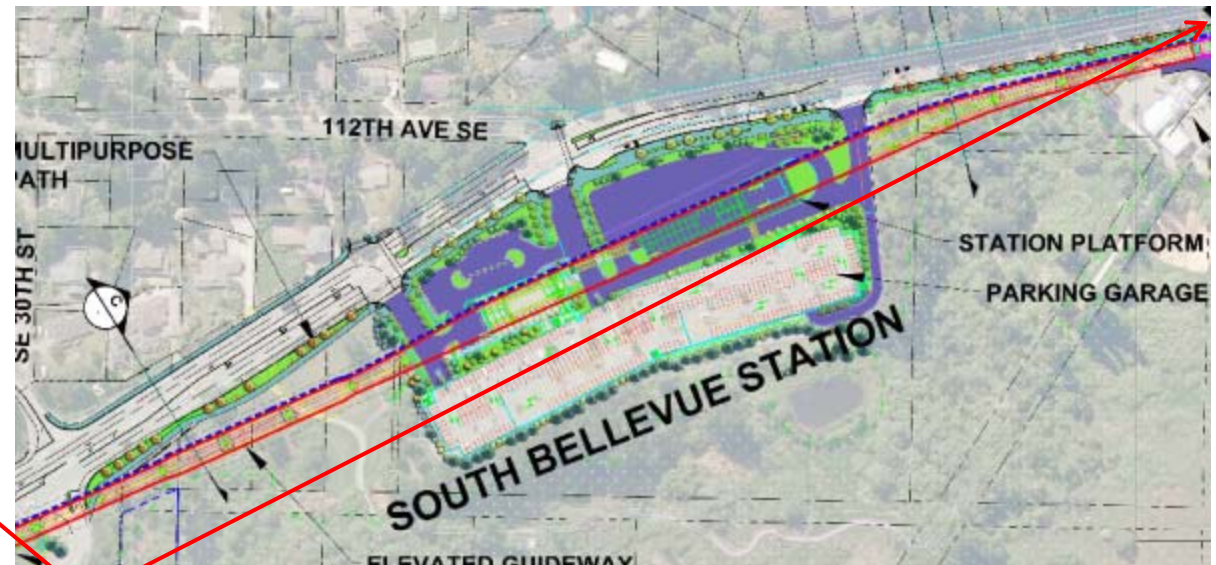
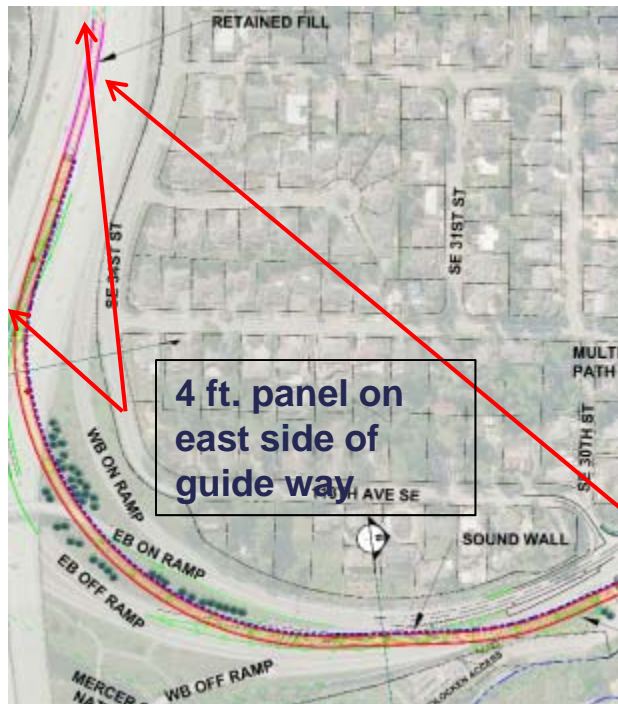








Noise analysis- operations

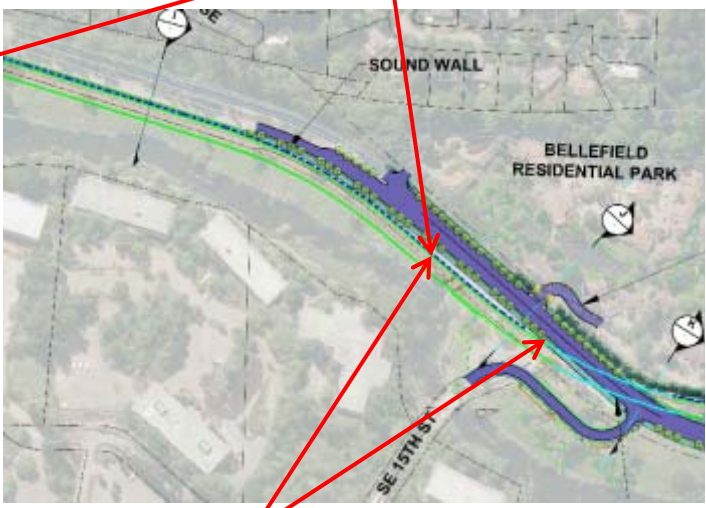
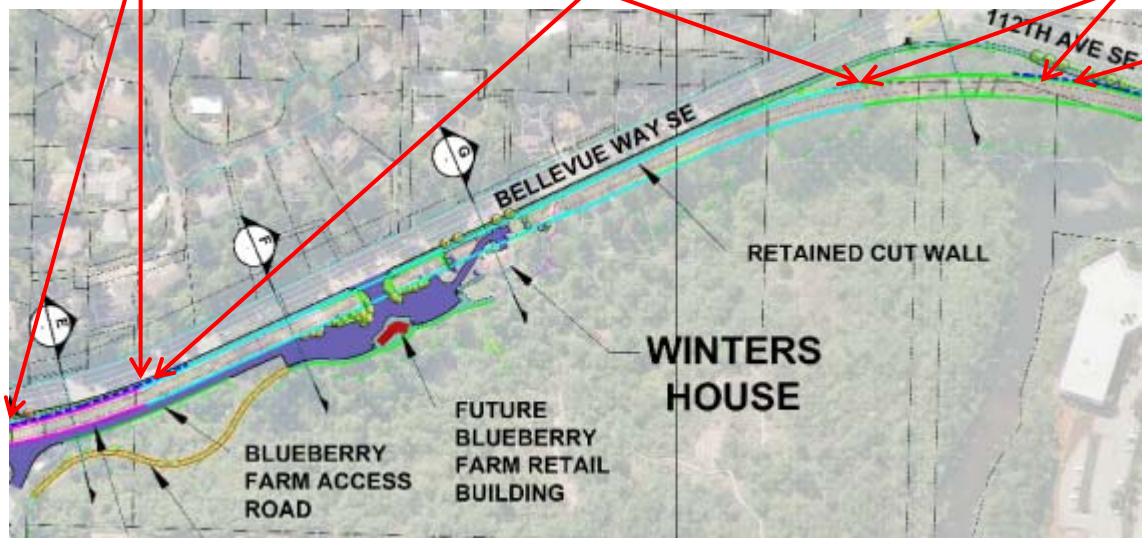


8 ft. wall on east side of Bellevue Way

4 ft. wall on east side of Bellevue Way, train in trench 12 ft. below grade

6 ft. wall on east side of Bellevue Way & 112th Ave SE

10 ft. wall on east side of 112th Ave SE



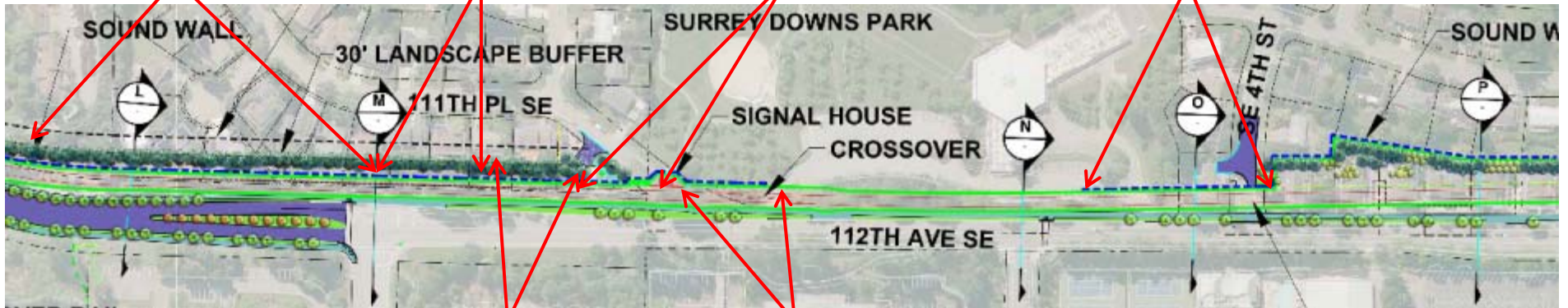
6 ft. wall on east side 112th Ave SE

10 ft. wall on west side of 112th Ave SE

12 ft. wall on west side of 112th Ave SE

12 ft. wall on west side of 112th Ave SE

8 ft. wall on west side of 112th Ave SE



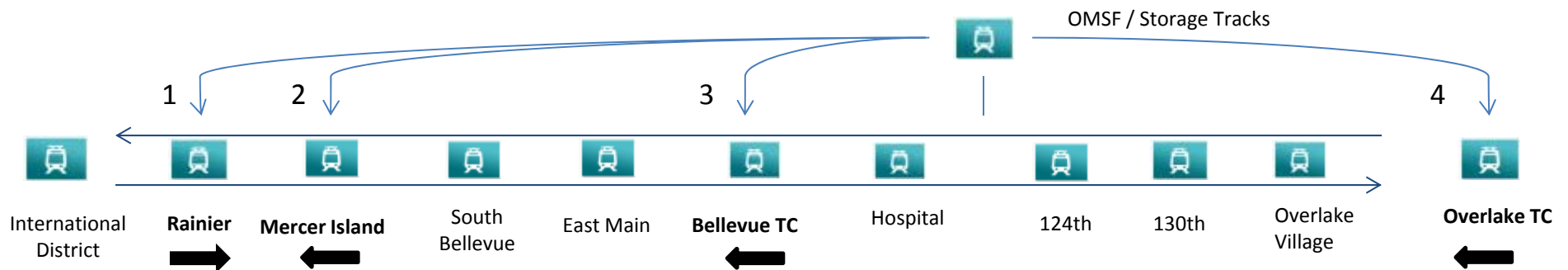
14 ft. wall on west side of 112th Ave SE

10 ft. wall on west side of 112th Ave SE
(replaced with 18 ft tall retaining wall).

City of Bellevue Light Rail CAC

Questions?

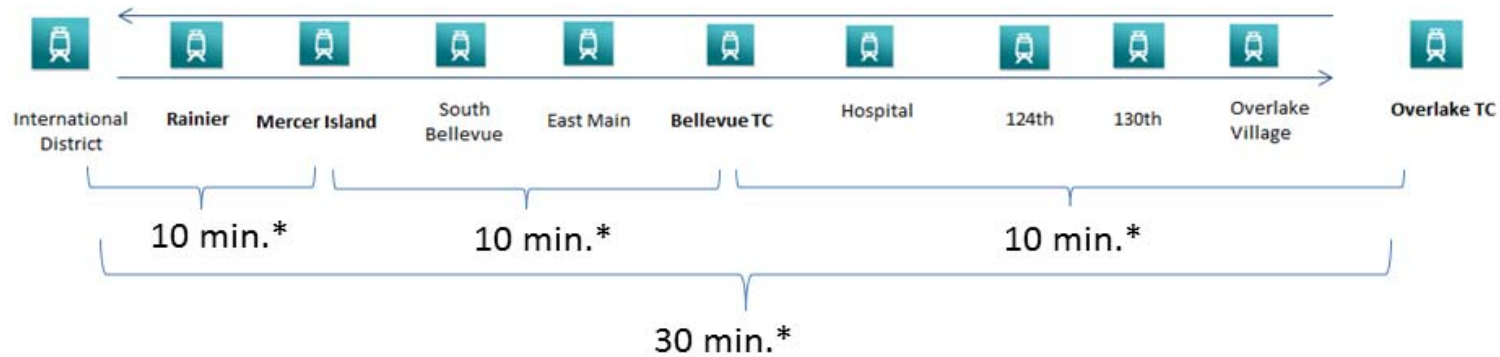
East Side Initial Charge



1st Trains Out (approx.)									
Train	From	Depart Time	OTC	Hospital	BTC	E Main	S Bell	MI	Rain
1	OMSF/Storage Tracks	4:29:00 AM		4:31:00 AM	4:34:00 AM	4:38:00 AM	4:42:00 AM	4:48:00 AM	5:07:00 AM
2	OMSF/Storage Tracks	4:42:00 AM		4:44:00 AM	4:46:00 AM	4:49:00 AM	4:52:00 AM	4:57:00 AM	
3	OMSF/Storage Tracks	4:47:00 AM		4:49:00 AM	4:51:00 AM				
4	OMSF/Storage Tracks	4:40:00 AM	4:50:00 AM	5:04:00 AM	5:06:00 AM	5:09:00 AM	5:12:00 AM	5:17:00 AM	5:22:00 AM

- Times are Approximate, based on current modeling
- 1st train operates at sweep speed (25MPH)
- Direction of movement

East Link Run Times & Frequencies

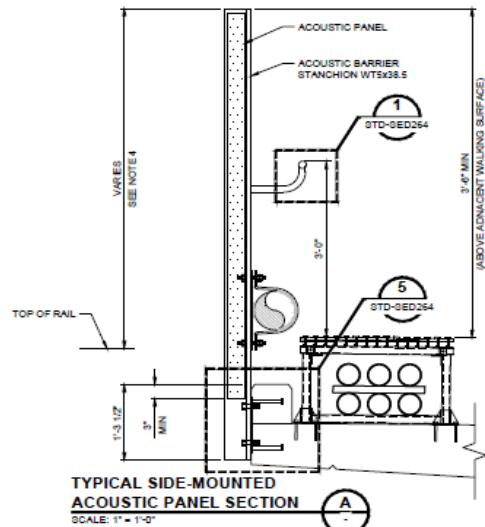


Weekday Train Frequencies	
5 am - 6 am	Every 15 minutes
6 am - 08:30 am	Every 8 minutes
08:30 am - 3 pm	Every 10 minutes
3 pm - 6:30 pm	Every 8 minutes
6:30 pm - 10 pm	Every 10 minutes
10 pm - 1 am	Every 15 minutes

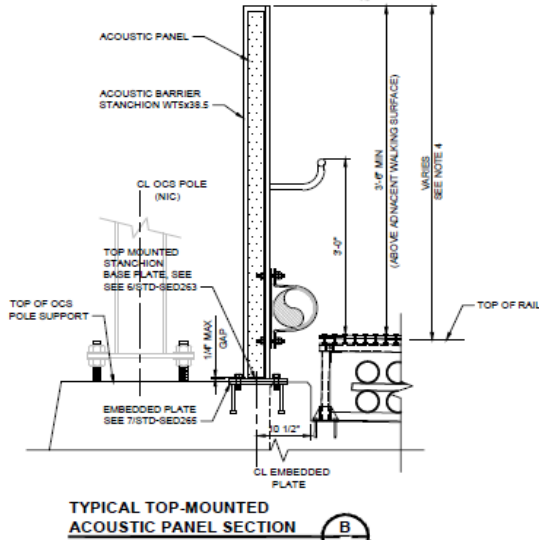
Saturday Train Frequencies	
5 am - 8 am	Every 15 minutes
8 am - 10 pm	Every 10 minutes
10pm - 1 am	Every 15 minutes

Sunday Train Frequencies	
6 am - 8 am	Every 15 minutes
8 am - 10 pm	Every 10 minutes
10pm - 12 am	Every 15 minutes

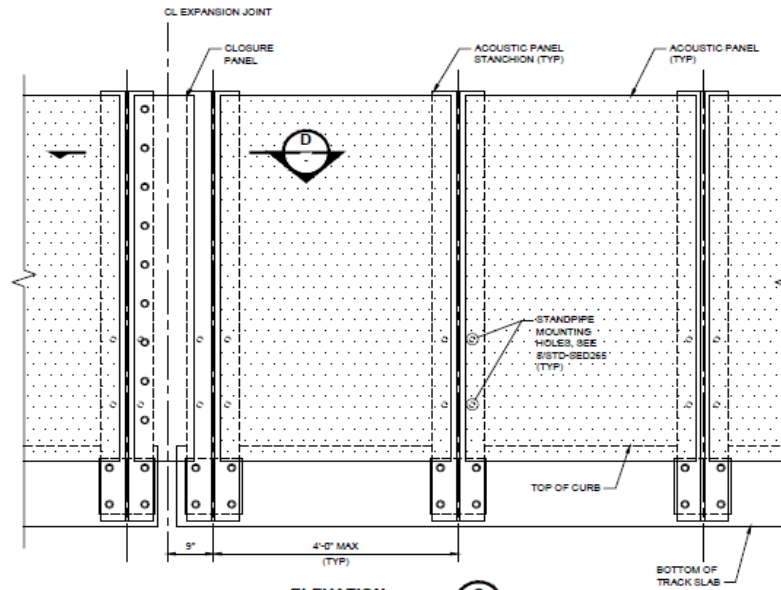
- *Run Times are Approximate
- Highlighted: Peak hour for East Link Noise Analysis (Maximum 16 trains/hour in 10pm to 7am Noise Ordinance)



TYPICAL SIDE-MOUNTED ACOUSTIC PANEL SECTION
SCALE: 1" = 1'-0"

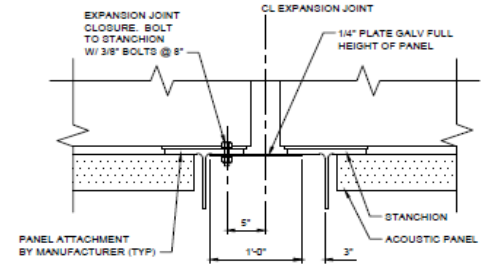


TYPICAL TOP-MOUNTED ACOUSTIC PANEL SECTION

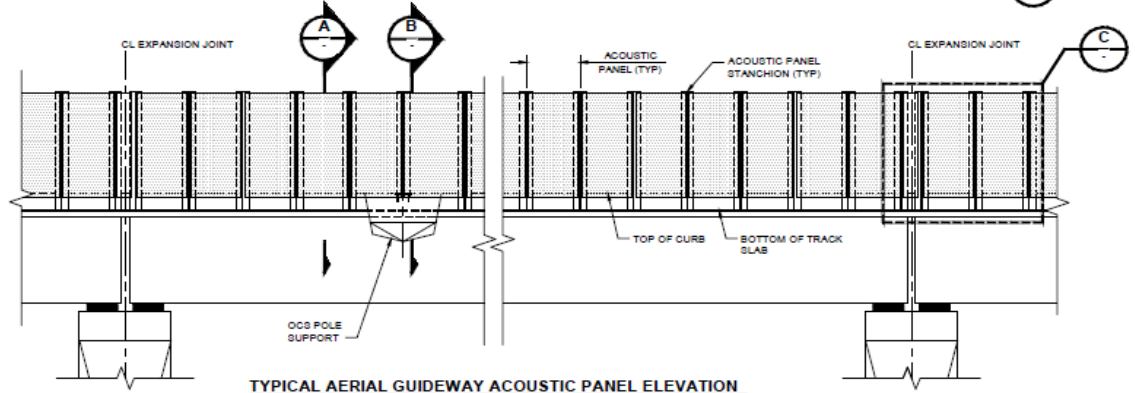


ELEVATION
SCALE: 1" = 1'-0"

- NOTES:**
1. THESE DETAILS ESTABLISH GENERAL CONFIGURATION FOR DESIGN OF ACOUSTIC BARRIER. THE DETAILS DO NOT ENCOMPASS GEOMETRY AT ALL LOCATIONS. IT HAS BEEN PROVIDED TO CONTRACTOR FOR GENERAL DETAILING INFORMATION ONLY.
 2. CONTRACTOR SHALL SUBMIT SHOP DRAWINGS OF ACOUSTIC BARRIER LAYOUT / CONFIGURATIONS FOR ITS FULL LENGTH.
 3. ALL ACOUSTIC PANEL STANCHIONS SHALL BE INSTALLED PLUMB.
 4. FOR LOCATION AND HEIGHT ABOVE TOP OF RAIL OF ACOUSTIC PANELS, SEE STRUCTURAL GENERAL LAYOUT DWG.
 5. ACOUSTIC PANEL FACE SHEETS SHALL BE RECTANGULAR.
 6. ALL EXPOSED PLAIN STEEL SHALL BE PAINTED IN ACCORDANCE WITH CONTRACT SPECIFICATION 09.96.00.



SECTION
SCALE: 1 1/2" = 1'-0"



TYPICAL AERIAL GUIDEWAY ACOUSTIC PANEL ELEVATION