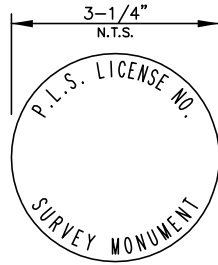


CAP DETAIL A
CAP LAYOUT FOR
COB CAPITAL PROJECTS

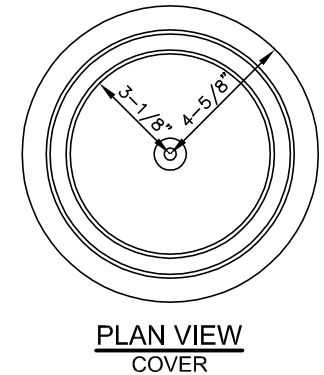
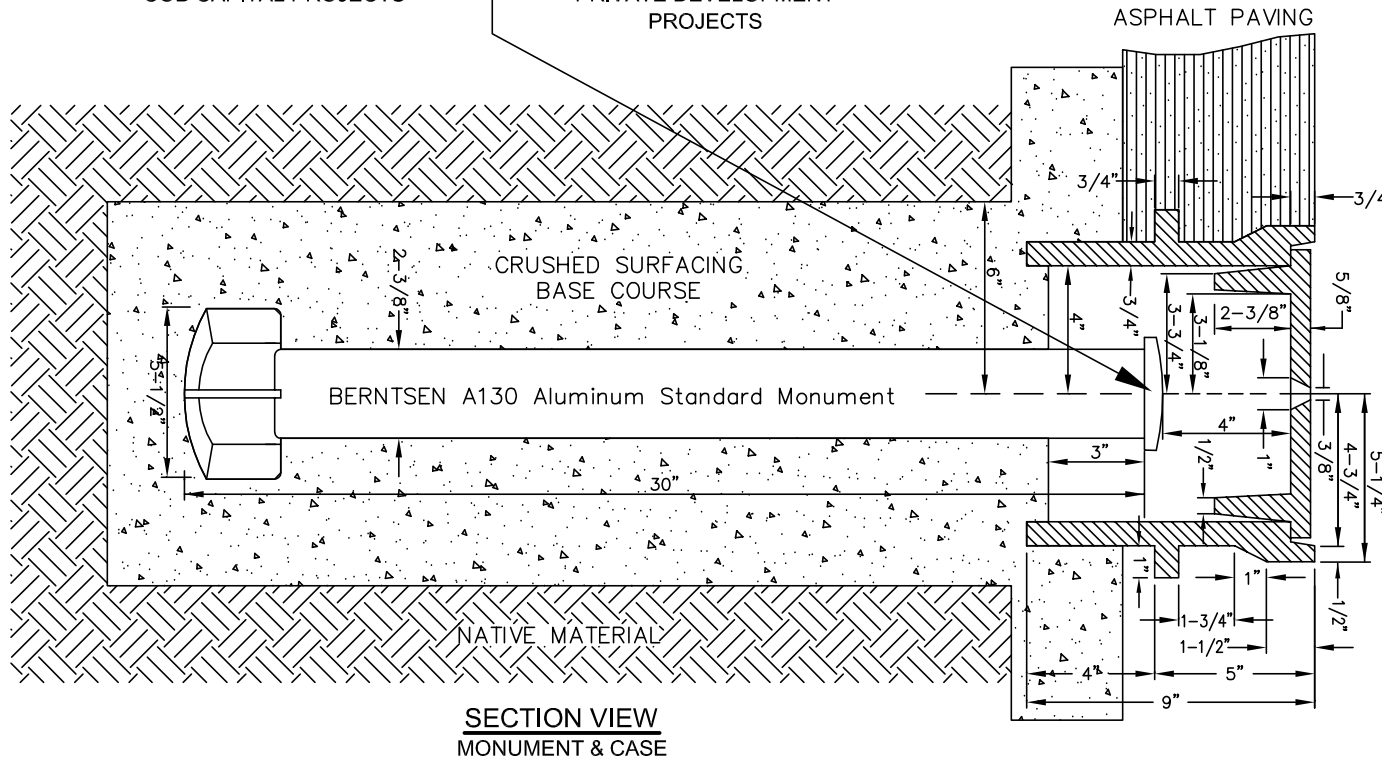


CAP DETAIL B
CAP LAYOUT FOR
PRIVATE DEVELOPMENT
PROJECTS

NOTES:

1. THE CASTING MATERIAL SHALL CONFORM TO ASTM-A48, CLASS 30. THE COVER AND SEAT SHALL BE MACHINED SO AS TO HAVE PERFECT CONTACT AROUND THE ENTIRE CIRCUMFERENCE AND FULL WIDTH OF BEARING SURFACE.

APPROXIMATE WEIGHTS STANDARD	
CASE	60 LBS
COVER	20 LBS
TOTAL	80 LBS



PIPE MONUMENT, CASE AND COVER

DRAWING NUMBER	RC-260-1
SCALE	NONE
REVISION DATE	12/16
DEPARTMENT	TRANS