



SUMMARY OF FINDINGS

Below is a summary of the data we collected on 176th Ave NE/176th Pl NE/177th Ave NE between NE 13th St and NE 16th St from 2/28/2018 to 3/6/2018.



ROADWAY CHARACTERISTICS

ROAD SPECIFICATIONS

176th Ave NE/176th Pl NE/177th Ave NE is a 36 ft wide street. On-street parking is allowed on both sides of the street, and there are sidewalks on both sides of the street.

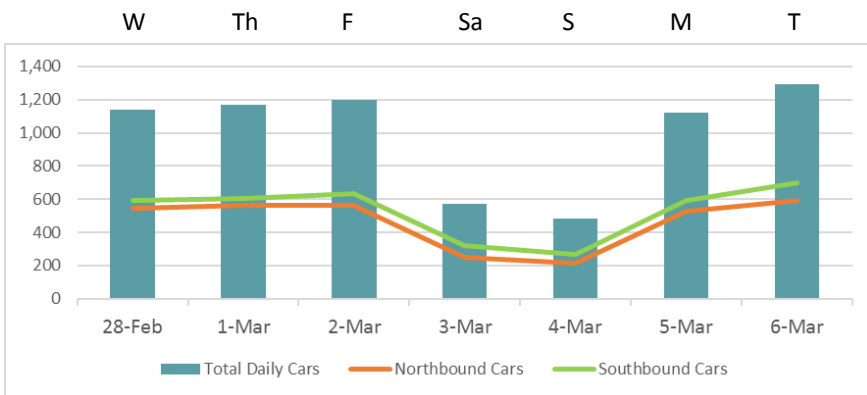
RESIDENTIAL STREET

176th Ave NE/176th Pl NE/177th Ave NE is a residential street in Northeast Bellevue with a speed limit of 25 mph.



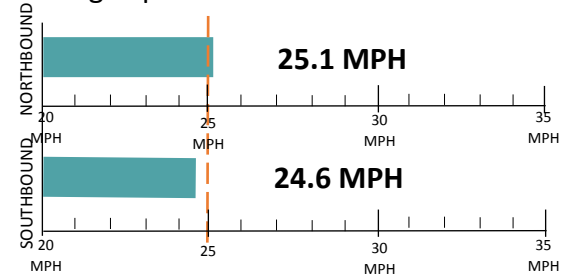
DAILY TRAFFIC

The Mid-Week Average on 176th Ave NE/176th Pl NE/177th Ave NE is 1,199 cars per day. Mid-Week Average includes data between Tuesday and Thursday.



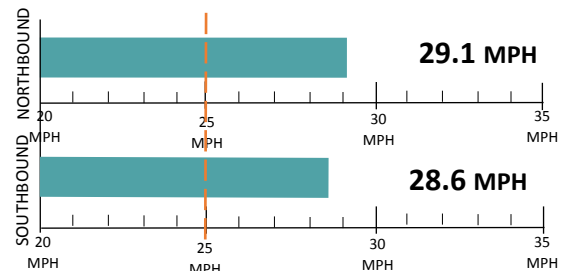
SPEED STUDY

Average Speeds



85th% Speed

85% of vehicles were traveling at or below this speed.



Speed Limit (25 MPH) | Car Speeds on 176th Pl NE



COLLISION HISTORY

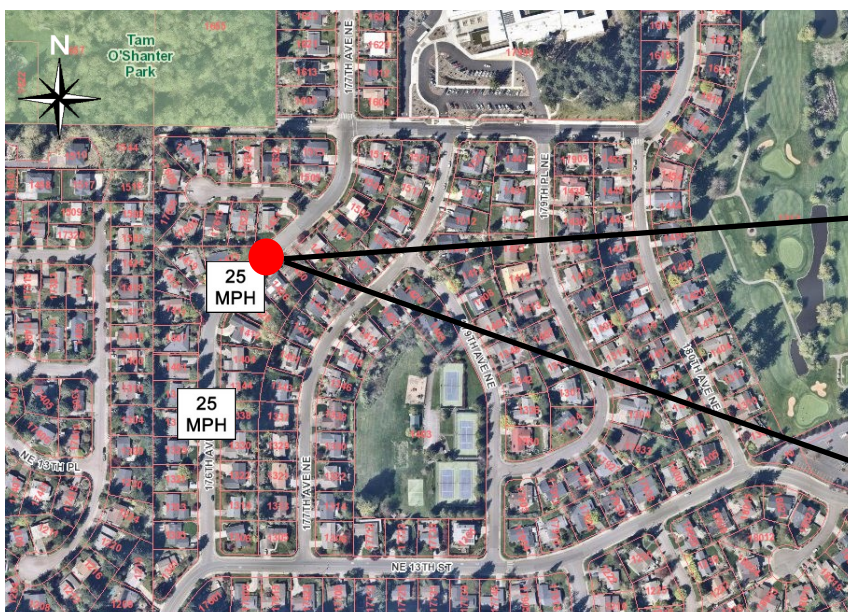
A three-year collision study was conducted on 176th Ave NE/176th Pl NE/177th Ave NE between NE 13th St and NE 16th St. There was one reported crash. The driver was cited for “inattention while driving” for driving into a parked vehicle.

KEY:

- Speed Study Location
- 25 MPH Pavement Marking



FIELD REVIEW





RECOMMENDATIONS

Below are our recommendations for 176th Ave NE/176th Pl NE/177th Ave NE based on the field reviews, data collection, and engineering analysis. More detail on these recommendations are outlined in the **Residential Traffic Guidebook** (BellevueWA.gov/ResidentialTrafficGuidebook). By educating the community and encouraging safe driving, we can begin to change driver behavior and reduce vehicle speeds.



EDUCATE THE COMMUNITY



REDUCE EXCESSIVE VEHICLE SPEEDS



IMPROVE PEDESTRIAN AND BICYCLE SAFETY



TRAFFIC SAFETY YARD SIGNS

This program involves lending communities portable signs that encourage motorists to respect the neighborhood, drive responsibly, and drive 25 mph. The signs are moved by community volunteers from place to place throughout the neighborhood every few days.



RADAR DOLLY

You can borrow and place a radar dolly on your street for up to two weeks. This unit gives motorists feedback on the speed at which they are driving on a digital reader board, encouraging them to obey the speed limit. Should you like to borrow the radar dolly, please request it by calling (425) 452-6457 or sign up on BellevueWA.gov/RadarDolly. Once we receive a request, City staff will contact you to make arrangements for both the drop-off and pick-up of the radar dolly at your home.



TRAFFIC ENFORCEMENT

The Transportation Department works closely with the Bellevue Police Department to enforce speed limits and other traffic laws in neighborhoods. Using key traffic data provided by Transportation staff, officers focus their scheduled patrols on the times and places where speeding most often occurs. Typically, targeted enforcement occurs during a one week timeframe. Enforcement is also available by request. To request enforcement, go to bellevueWA.gov/tsr or call (425) 577-5656.

MORE INFORMATION

Find out more about these recommendations in our **Residential Traffic Guidebook** or by visiting the Neighborhood Traffic Safety Services website.

GUIDEBOOK: BellevueWA.gov/ResidentialTrafficGuidebook

WEBSITE: BellevueWA.gov/NTSS

