



## SUMMARY OF FINDINGS

Below is a summary of the data we collected on NE 13th Street west of 102nd Avenue NE from 6/12/2018 to 6/18/2018.

### ROADWAY CHARACTERISTICS

#### ROAD SPECIFICATIONS

NE 13th Street and 102nd Avenue NE are approximately 24 ft wide streets. On-street parking is allowed on both sides of the streets.

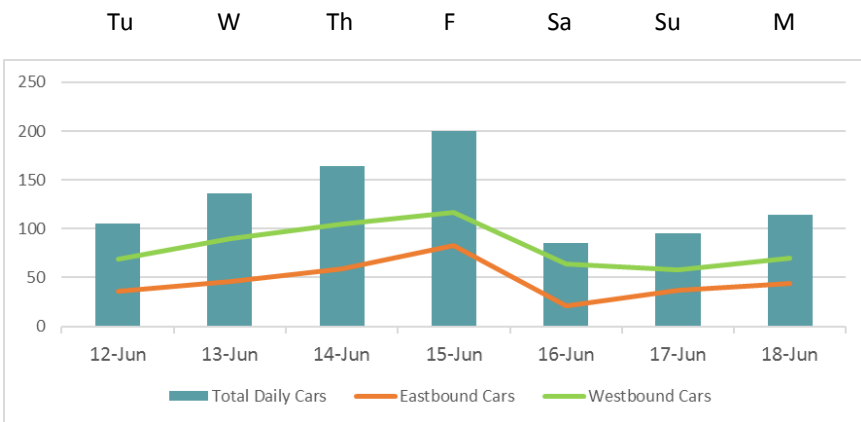
#### RESIDENTIAL STREET

NE 13th Street and 102nd Avenue NE are residential streets in Northwest Bellevue with a speed limit of 25 mph.



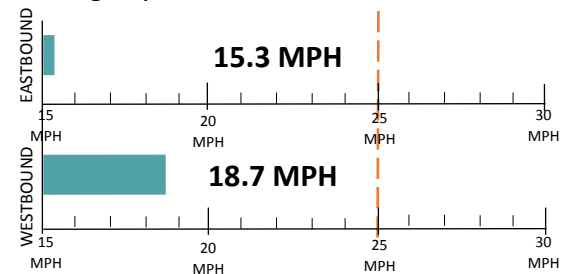
#### DAILY TRAFFIC

The Mid-Week Average on NE 13th Street is 135 cars per day. Mid-Week Average includes data between Tuesday and Thursday.



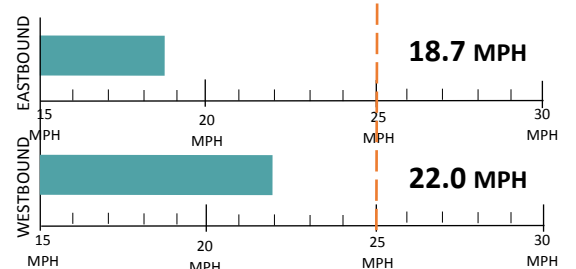
#### SPEED STUDY

##### Average Speeds



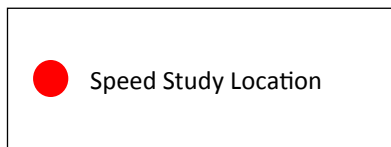
##### 85th% Speed

85% of vehicles were traveling at or below this speed.



Speed Limit (25 MPH) | Car Speeds on NE 13th Street

#### KEY:

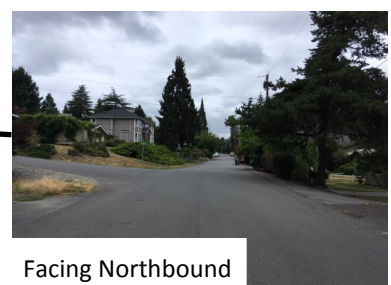
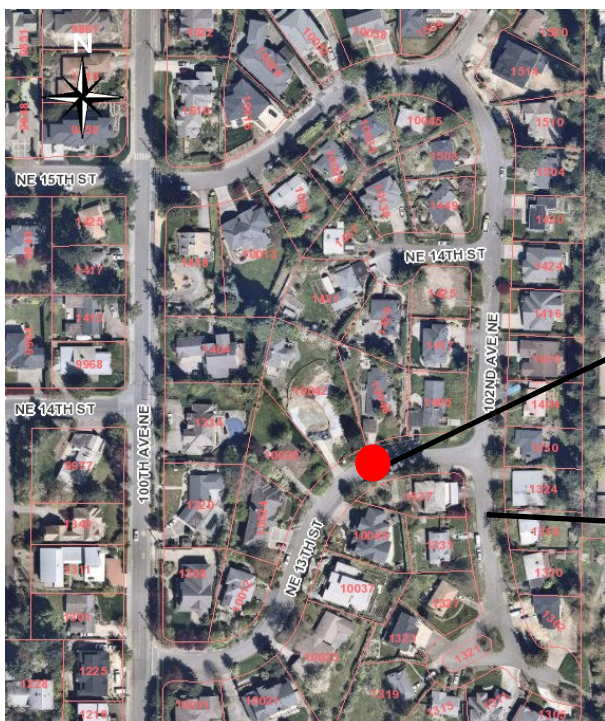


#### COLLISION HISTORY

A three-year collision study was conducted on 102nd Avenue NE, NE 13th Street, NE 14th Street, and NE 15th Street east of 100th Avenue NE. There were no reported crashes.



#### FIELD REVIEW





## RECOMMENDATIONS

Below are our recommendations for 102nd Avenue NE and NE 13th Street based on the field reviews, data collection, and engineering analysis. More detail on these recommendations are outlined in the **Residential Traffic Guidebook** ([BellevueWA.gov/ResidentialTrafficGuidebook](http://BellevueWA.gov/ResidentialTrafficGuidebook)). By educating the community and encouraging safe driving, we can begin to change driver behavior and reduce vehicle speeds.



**EDUCATE THE COMMUNITY**



**REDUCE EXCESSIVE VEHICLE SPEEDS**



**IMPROVE PEDESTRIAN AND BICYCLE SAFETY**



### TRAFFIC SAFETY YARD SIGNS

This program involves lending communities portable signs that encourage motorists to respect the neighborhood, drive responsibly, and drive 25 mph. The signs are moved by community volunteers from place to place throughout the neighborhood every few days.



### RADAR DOLLY

You can borrow and place a radar dolly on your street for up to two weeks. This unit gives motorists feedback on the speed at which they are driving on a digital reader board, encouraging them to obey the speed limit. Should you like to borrow the radar dolly, please request it by calling (425) 452-6457 or sign up on [BellevueWA.gov/RadarDolly](http://BellevueWA.gov/RadarDolly). Once we receive a request, City staff will contact you to make arrangements for both the drop-off and pick-up of the radar dolly at your home.

## VISION ZERO



Bellevue’s Vision Zero initiative reflects the city’s commitment to reduce traffic deaths and serious injury collisions on city streets to zero by the year 2030. In 2015, the City Council passed a resolution providing a framework to achieve this goal. It states "the life, safety and health of residents, employees and visitors to Bellevue is the City Council's highest priority." **By participating in one of the recommendations above, you are helping the City of Bellevue in our efforts to make our streets safer for everyone.**

## MORE INFORMATION

Find out more about these recommendations in our **Residential Traffic Guidebook** or by visiting the Neighborhood Traffic Safety Services website.

**GUIDEBOOK:** [BellevueWA.gov/ResidentialTrafficGuidebook](http://BellevueWA.gov/ResidentialTrafficGuidebook)

**WEBSITE:** [BellevueWA.gov/NTSS](http://BellevueWA.gov/NTSS)

