

# Focus on the Future

Setting the Stage: Demographic Trends

*Department of Planning &  
Community Development*





# Older Adults

Past, Present and Future

Notable Characteristics

Growing Needs





# Past, Present and Future

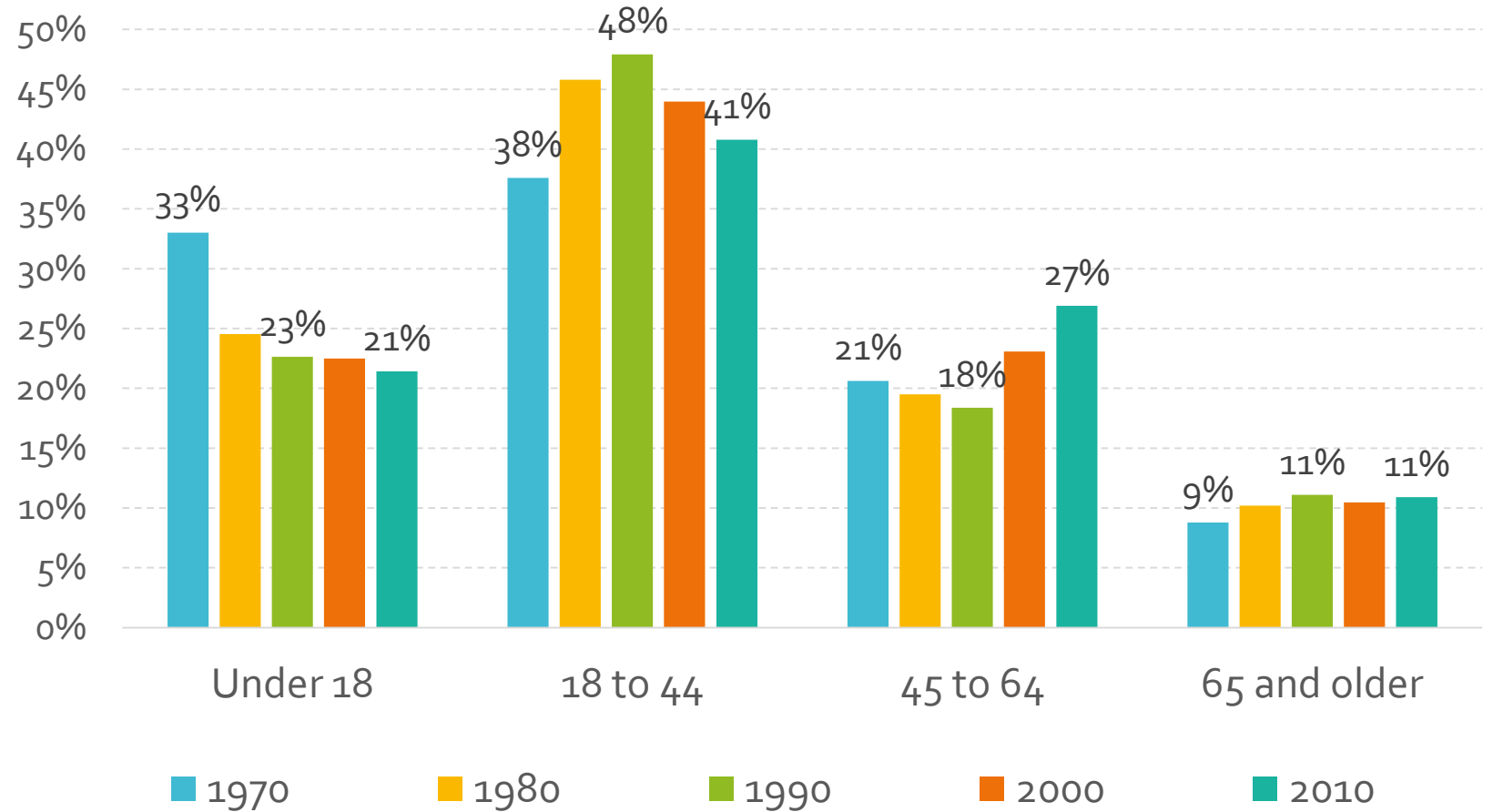
Where have we been?

Where we are today?

Where are we headed?

Where have we been?

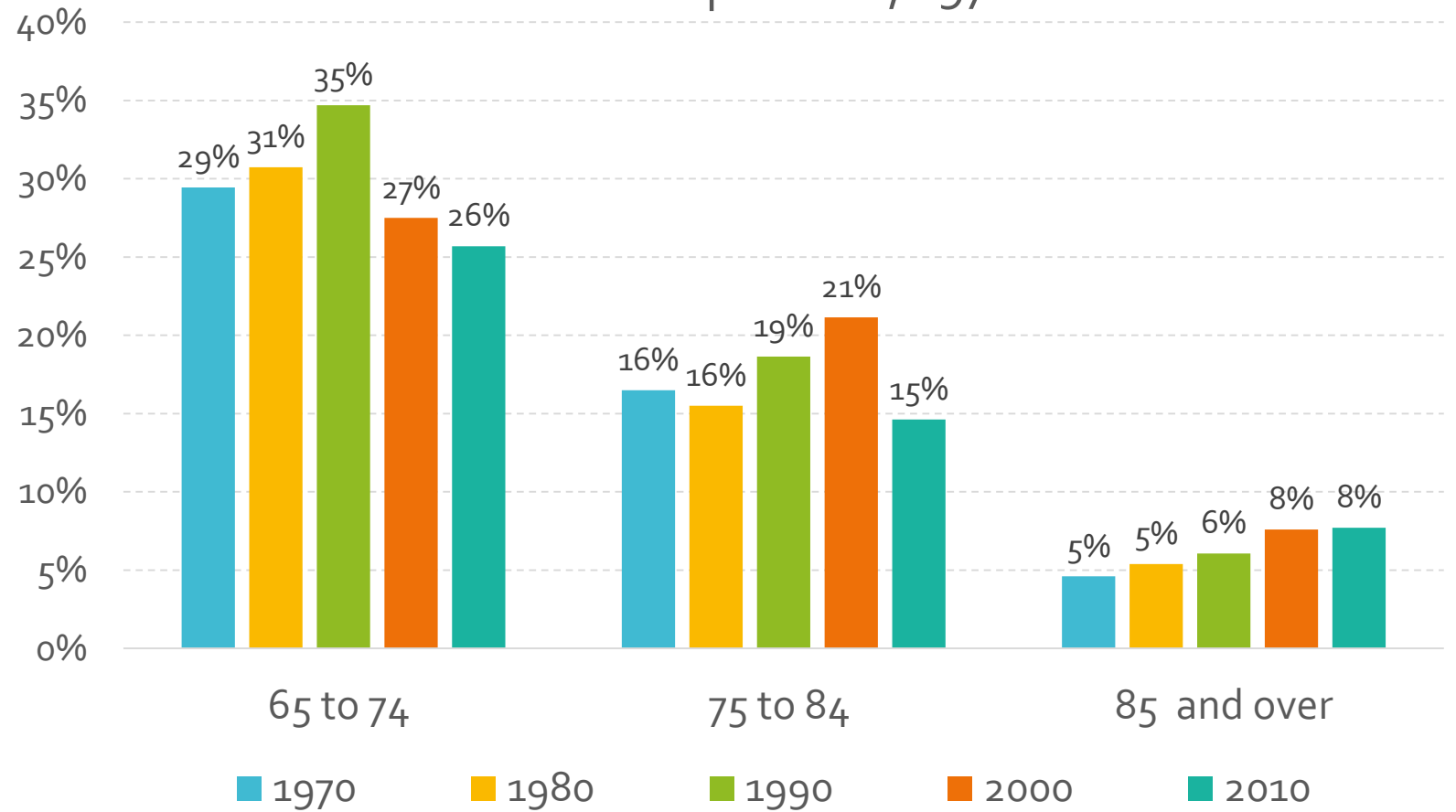
## Shifts in the Distribution of King County's Age Cohorts, 1970 to 2010



Source: NHGIS, from U.S. Census Bureau, 1970-2010 decennial Census

Where have we been?

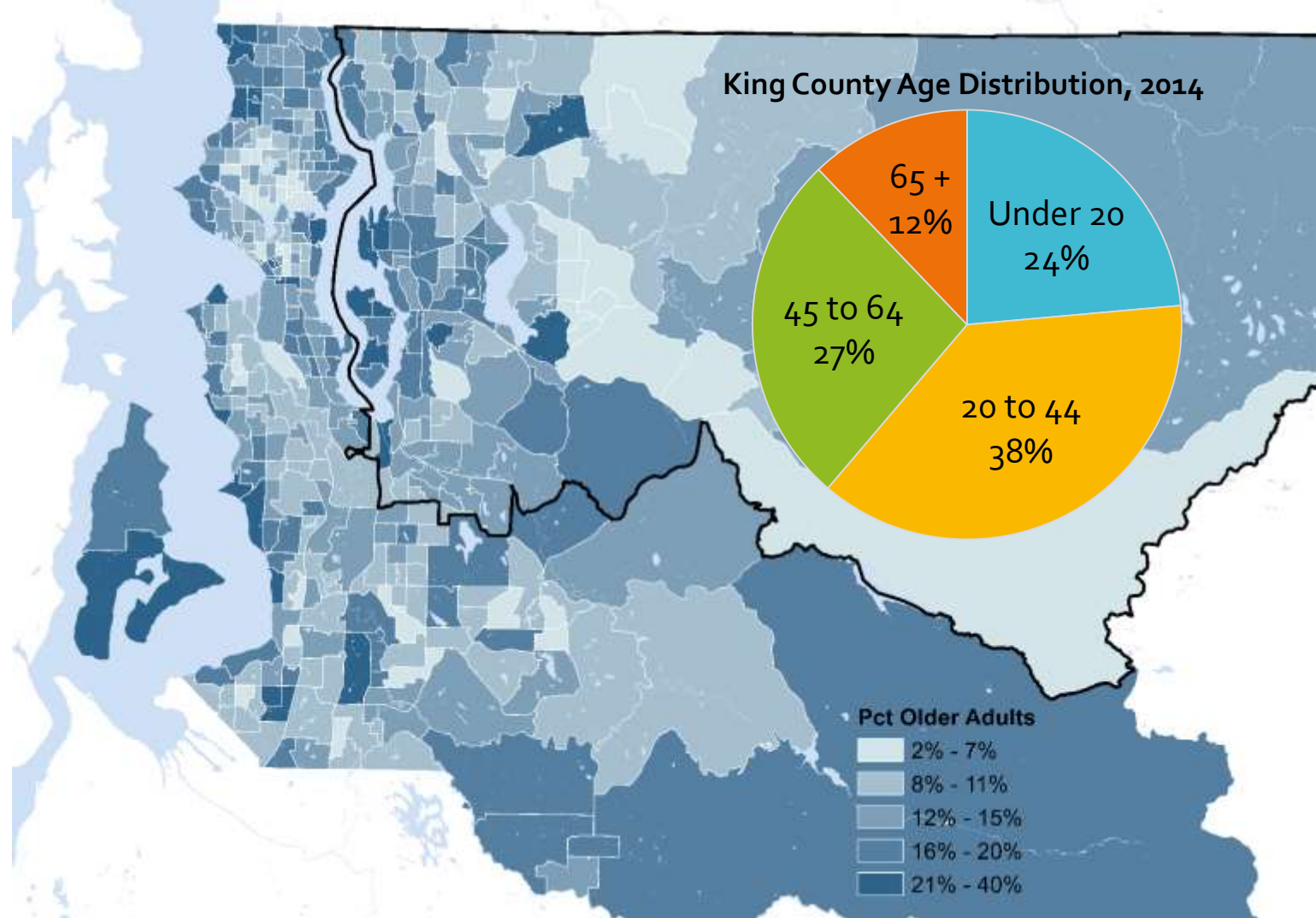
## Shifts in the Distribution of King County's Older Adult Population, 1970-2010



Source: NHGIS, from U.S. Census Bureau, 1970-2010 decennial Census

Where are we today?

### Percentage of Older Adult (65+) Population by Census Tract, 2014



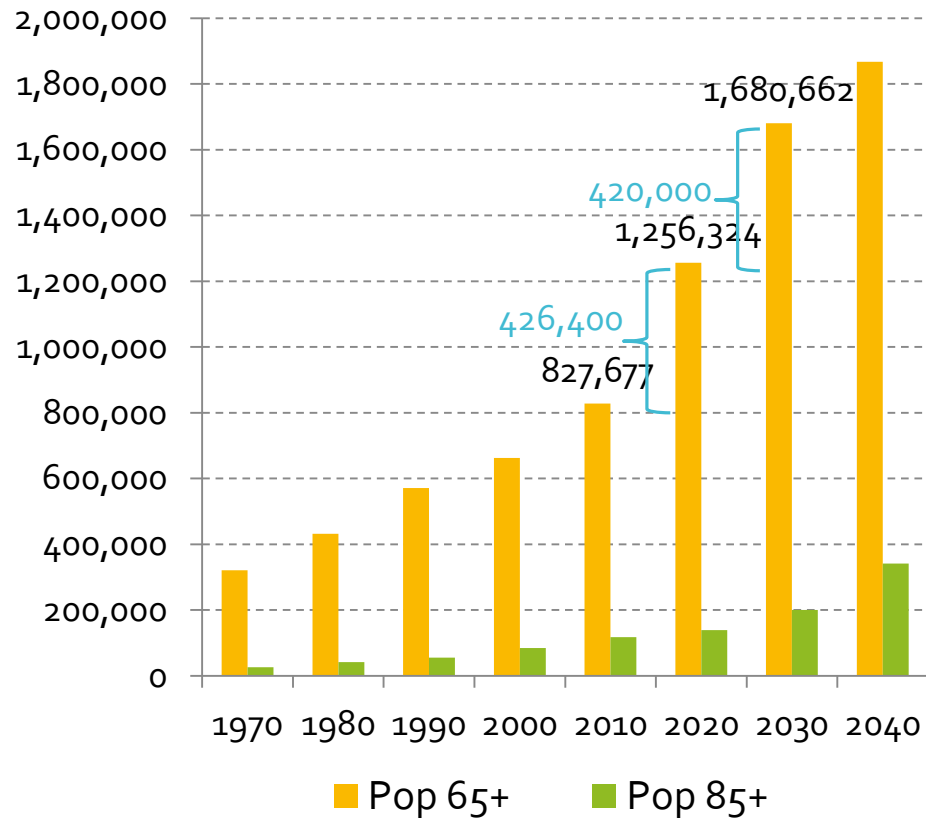
Sources: Washington State Office of Financial Management, 2014 Small Area Estimates Program

# Where are we headed?

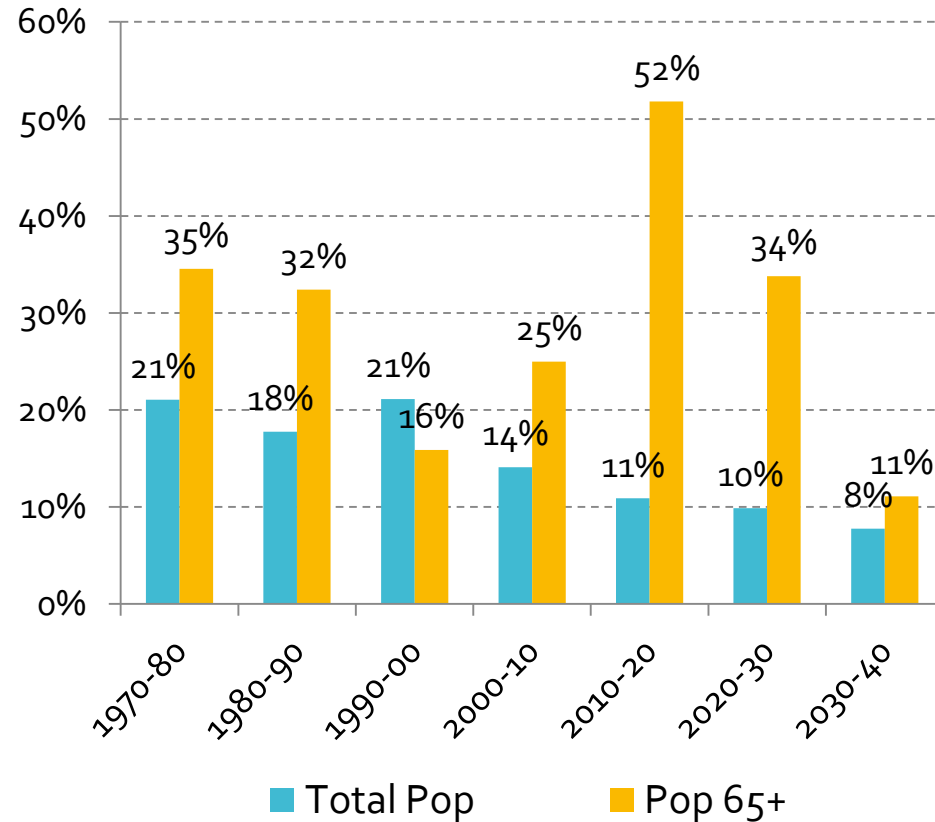
- In **2050**, the population aged 65 and over is projected to be almost **double** of what it was in **2012**, and by **2030**, more than **20 percent** of U.S. residents are projected to be aged 65 and over compared to **13 percent** in 2010 and **9.8 percent** in 1970.
- **Baby boomers** are largely responsible for this increase as they **began turning 65 in 2011**. By 2030, all of the baby boomers will have moved into the ranks of the older population.
- The Next America – Pew Research – [Population Pyramid](#)

# The 65 and Over Population Will Double in 20 Years within Washington State

## Growth in the Elderly Population by Age Group



## Decade Growth Trends: Total Population and Age 65+

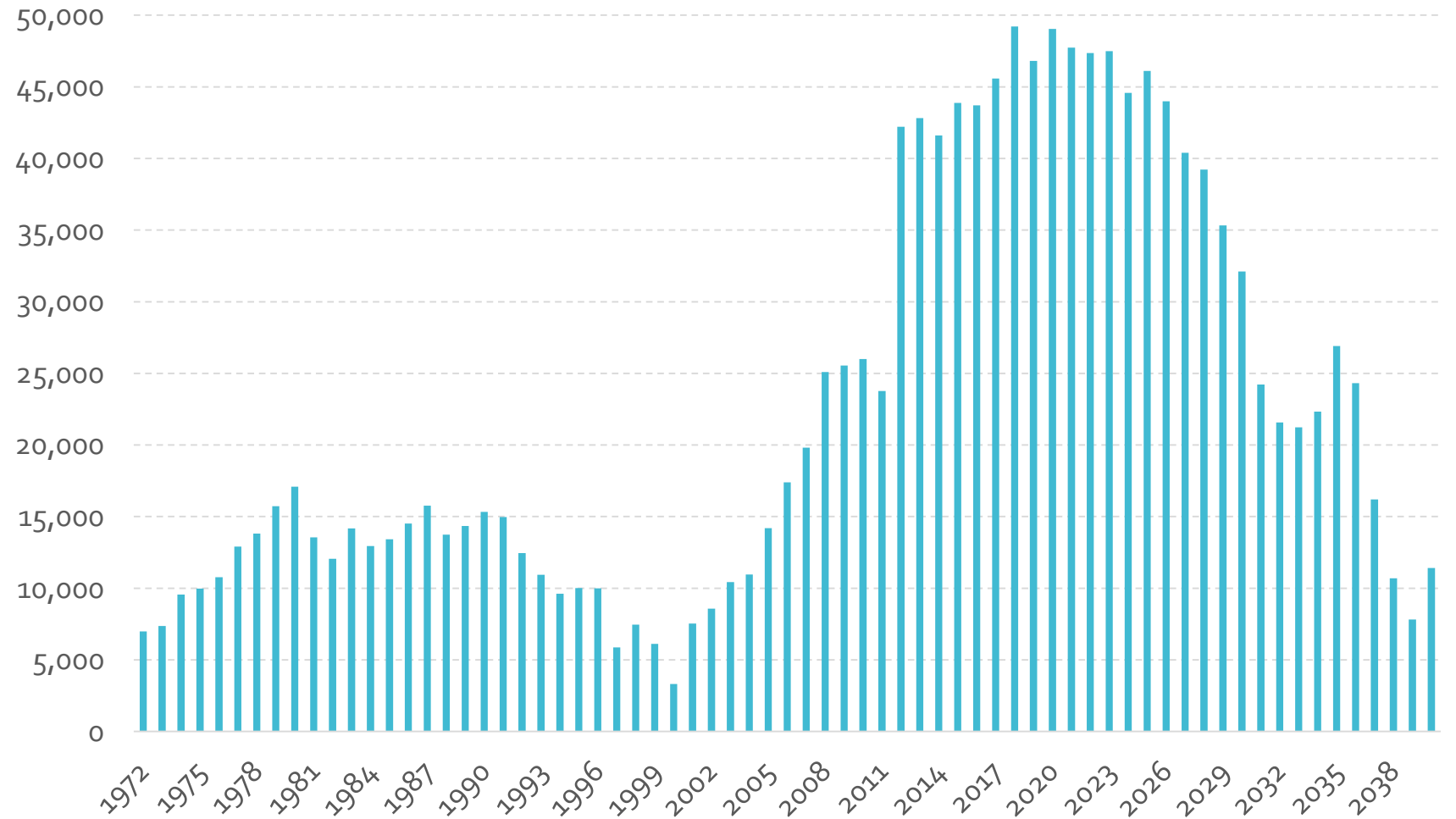


Sources: Washington State Office of Financial Management, 2014 State Forecast



Where are we headed?

## Annual Change in Populations 65 and over



Sources: Washington State Office of Financial Management, 2014 State Forecast

# Dependency Ratio Trends and Forecasts

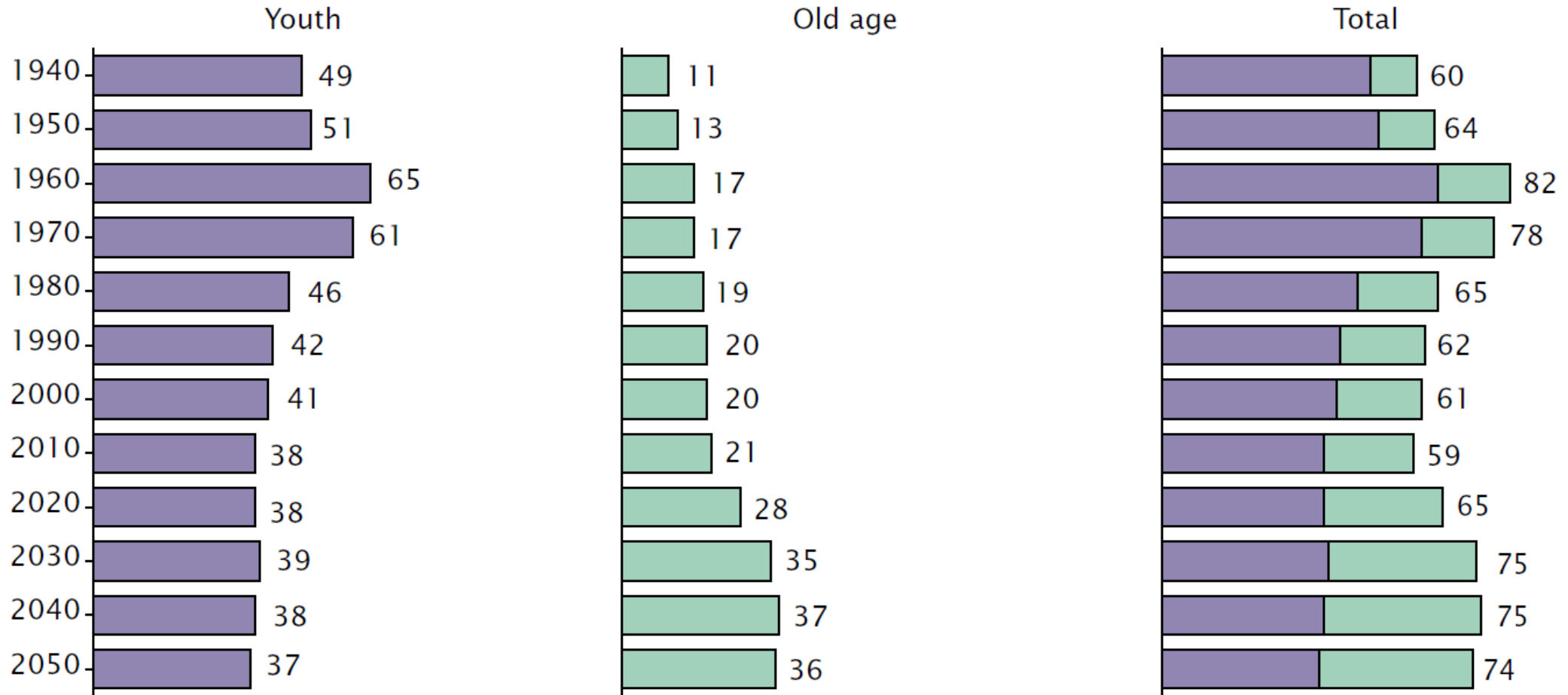
## An Aging Population Means More People to Support with Less People to Support Them

| Year | Child Dependency Ratio (0-17) | Aged Dependency Ratio (65+) | Total Dependency Ratio | Total Dependents (Millions) | Percent of Population of Working Age (18-64) |
|------|-------------------------------|-----------------------------|------------------------|-----------------------------|--|
| 1970 | 60:100                        | 17:100                      | 77:100                 | 1.5                         | 56.6%  |
| 1980 | 44:100                        | 17:100                      | 61:100                 | 1.6                         | 62.0%  |
| 1990 | 42:100                        | 19:100                      | 61:100                 | 1.8                         | 62.2%  |
| 2000 | 41:100                        | 18:100                      | 59:100                 | 2.2                         | 63.1%  |
| 2010 | 37:100                        | 19:100                      | 56:100                 | 2.4                         | 64.2%  |
| 2020 | 37:100                        | 28:100                      | 65:100                 | 2.9                         | 60.7%  |
| 2030 | 39:100                        | 36:100                      | 74:100                 | 3.5                         | 57.3%  |
| 2040 | 39:100                        | 37:100                      | 76:100                 | 3.8                         | 56.9%  |

Dependency ratio measures how many dependent persons (aged 0-17 and 65 and over) per one hundred working age people (aged 18-64)

Sources: Washington State Office of Financial Management, 2014 State Forecast

## Dependency Ratios for the United States: 1940 to 2050



Note: Total dependency = ((Population under 18 + Population aged 65 and over) / (Population aged 18 to 64)) \* 100.

Old-age dependency = (Population aged 65 and over / Population aged 18 to 64) \* 100.

Youth dependency = (Population under 18 / Population aged 18 to 64) \* 100.

Source: U.S. Census Bureau, 1940 to 2012 Population Estimates and 2012 National Projections.

Source: U. S. Census Bureau, *An Aging Nation: The Older Population in the United States*



# Notable Characteristics

Diversity explosion

Disability status/types

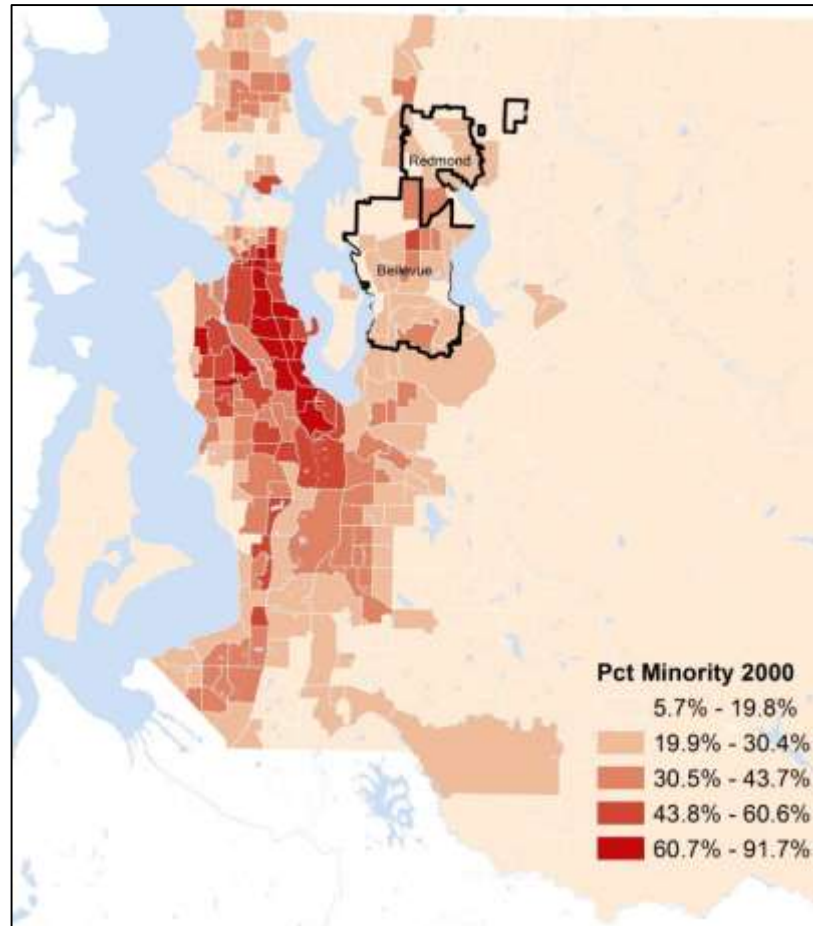
Income

Housing

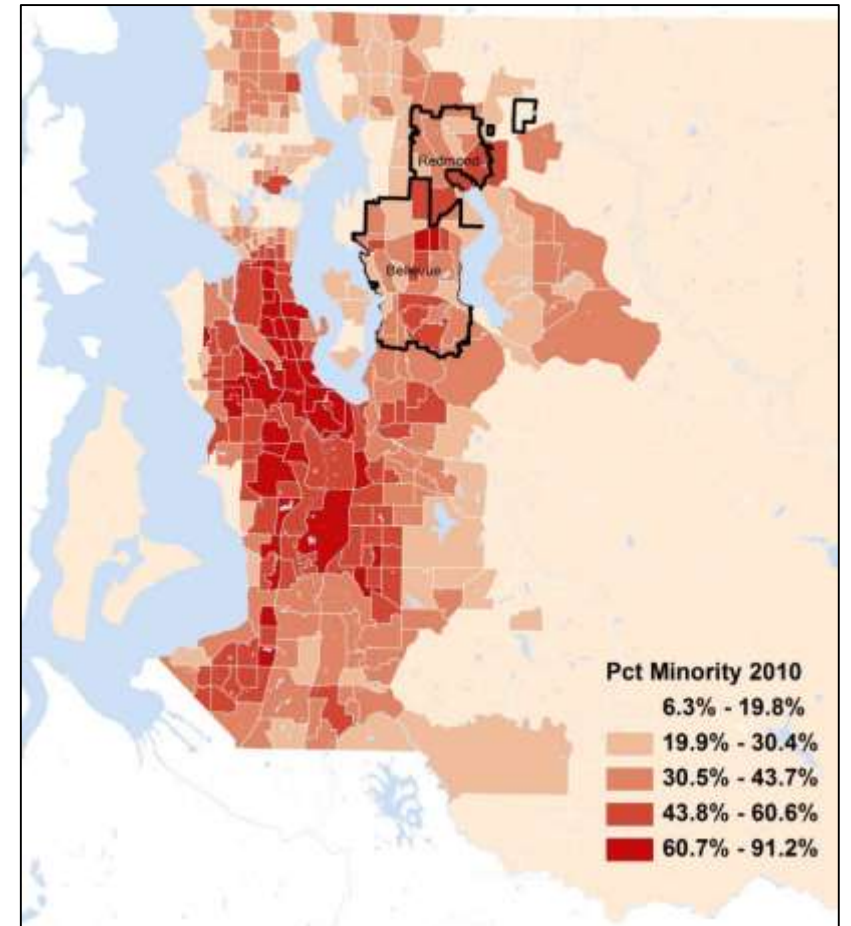


# The Diversity Explosion

## Percent Minority in 2000



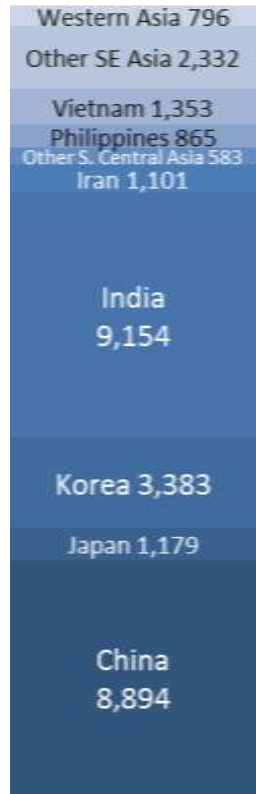
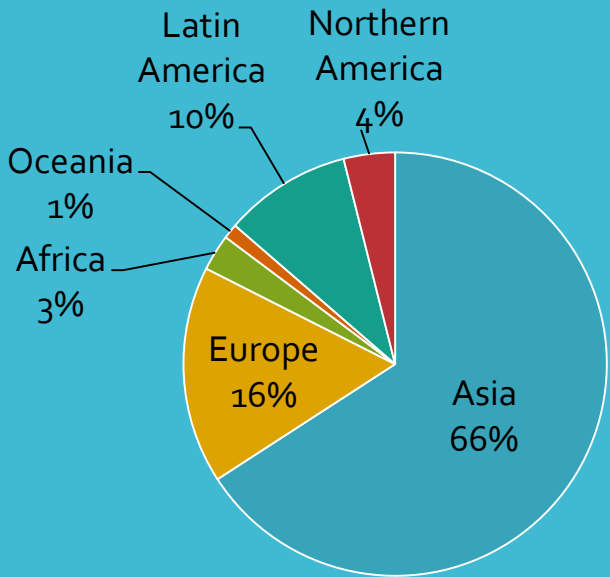
## Percent Minority in 2010



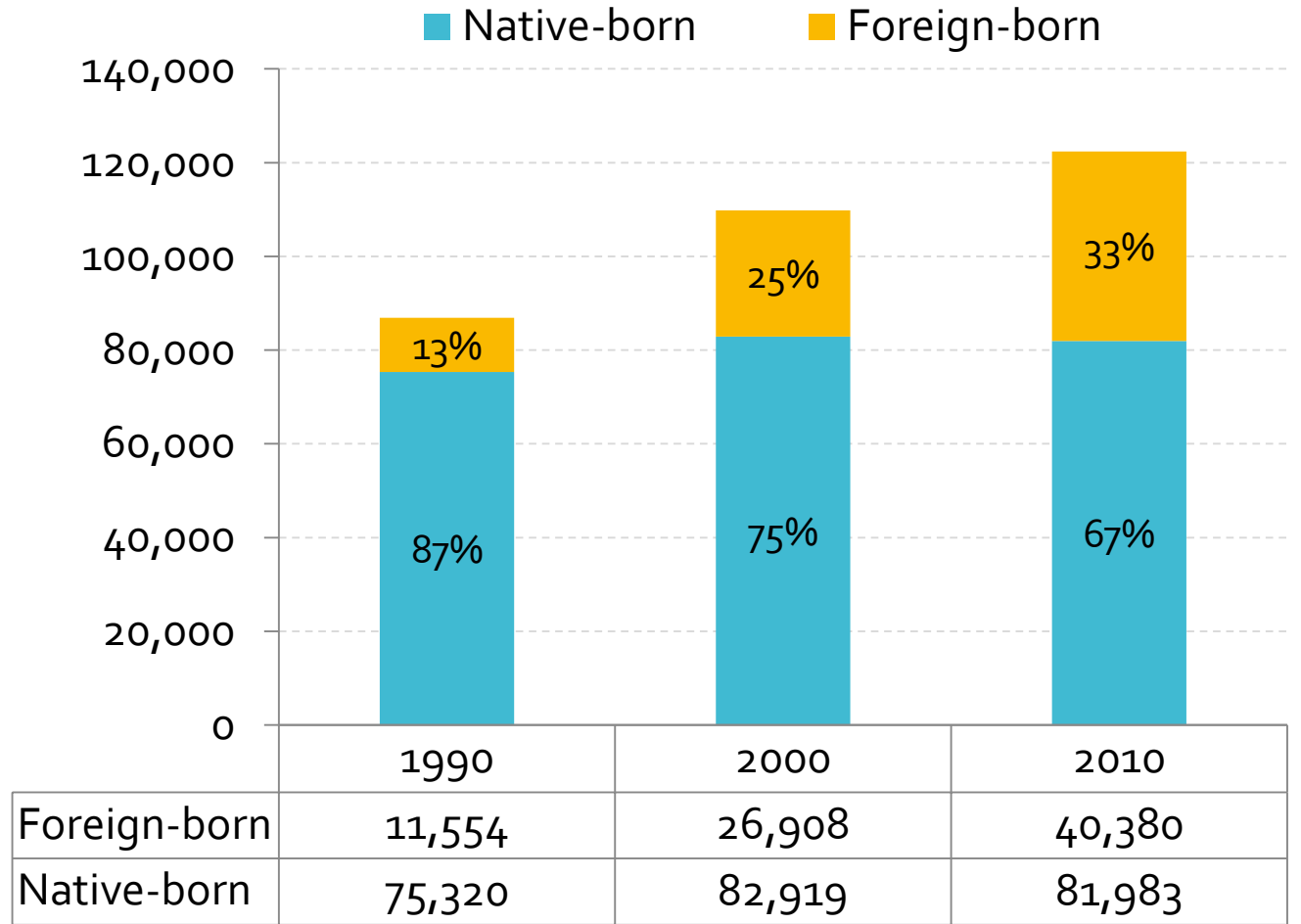
Source: U.S. Census Bureau, 2000 Census and 2010 Census

# Growth of Foreign Born

The foreign born population comprised 66 percent of Bellevue's growth from 1990 to 2000 and 107 percent between 2000 and 2010.

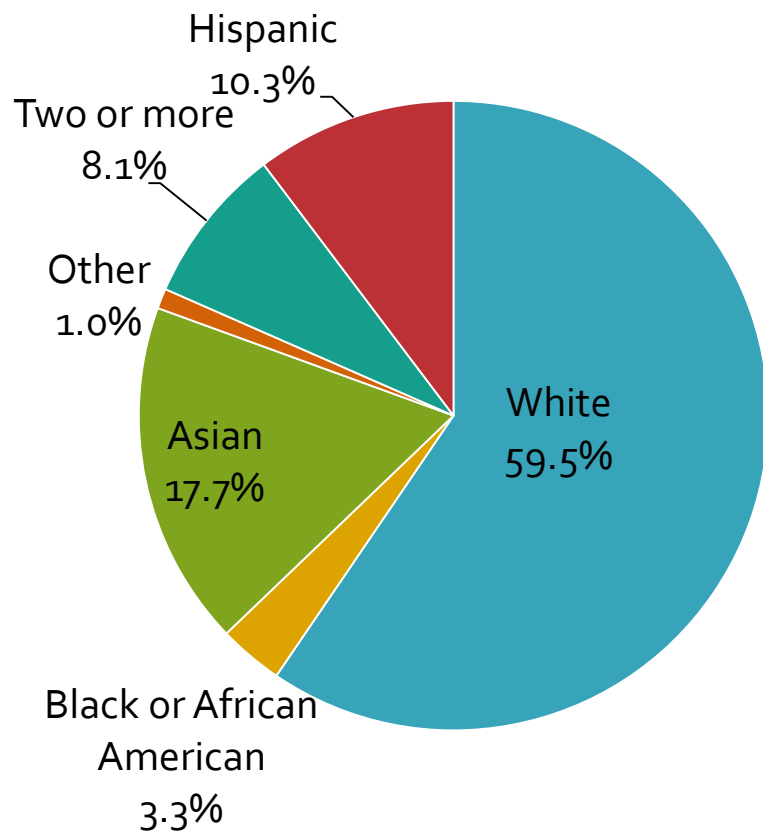


## Growth in Bellevue's Native and Foreign Born Populations, 1990-2010

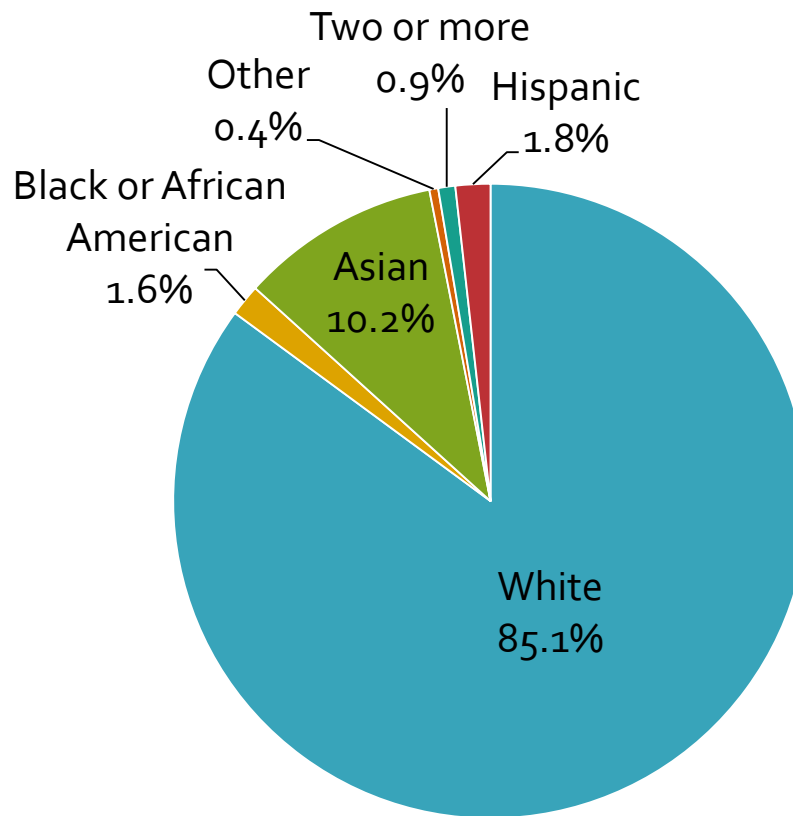


Source: U.S. Census Bureau, 1990, 2000 Census and 2010 American Community Survey

**Race/ethnicity of Eastside Population  
Under 18 years, 2010**



**Race/ethnicity of Eastside Population  
65 years and over, 2010**



Source: U.S. Census Bureau, 2010 Census

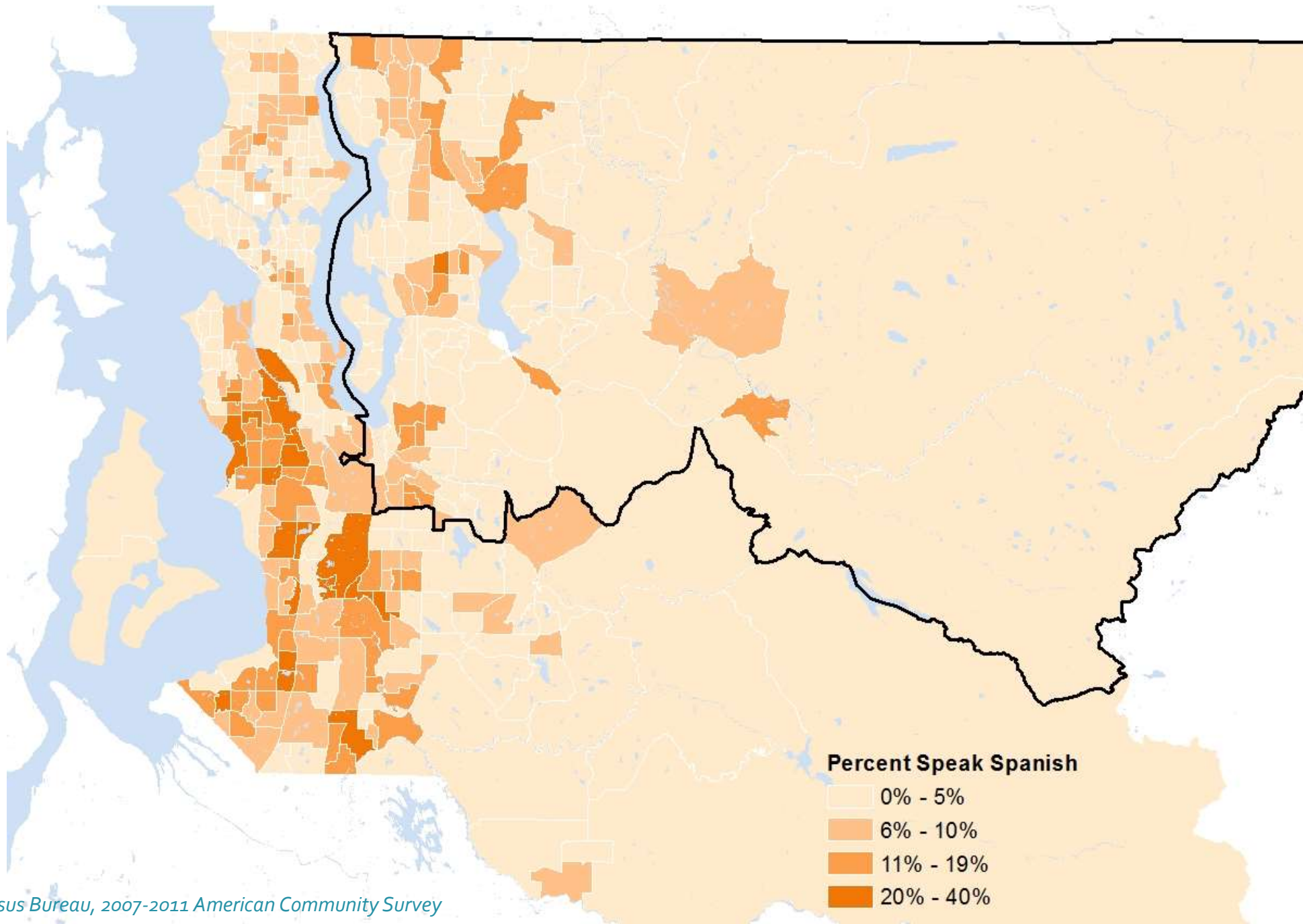
About **27 percent** of people living on the Eastside over the age of 5 spoke a language other than English in 2009-2013, and **87 different languages** were spoken by students enrolled in Bellevue School District in 2014-2015.

### Top Languages Spoken at Home Other than English on the Eastside

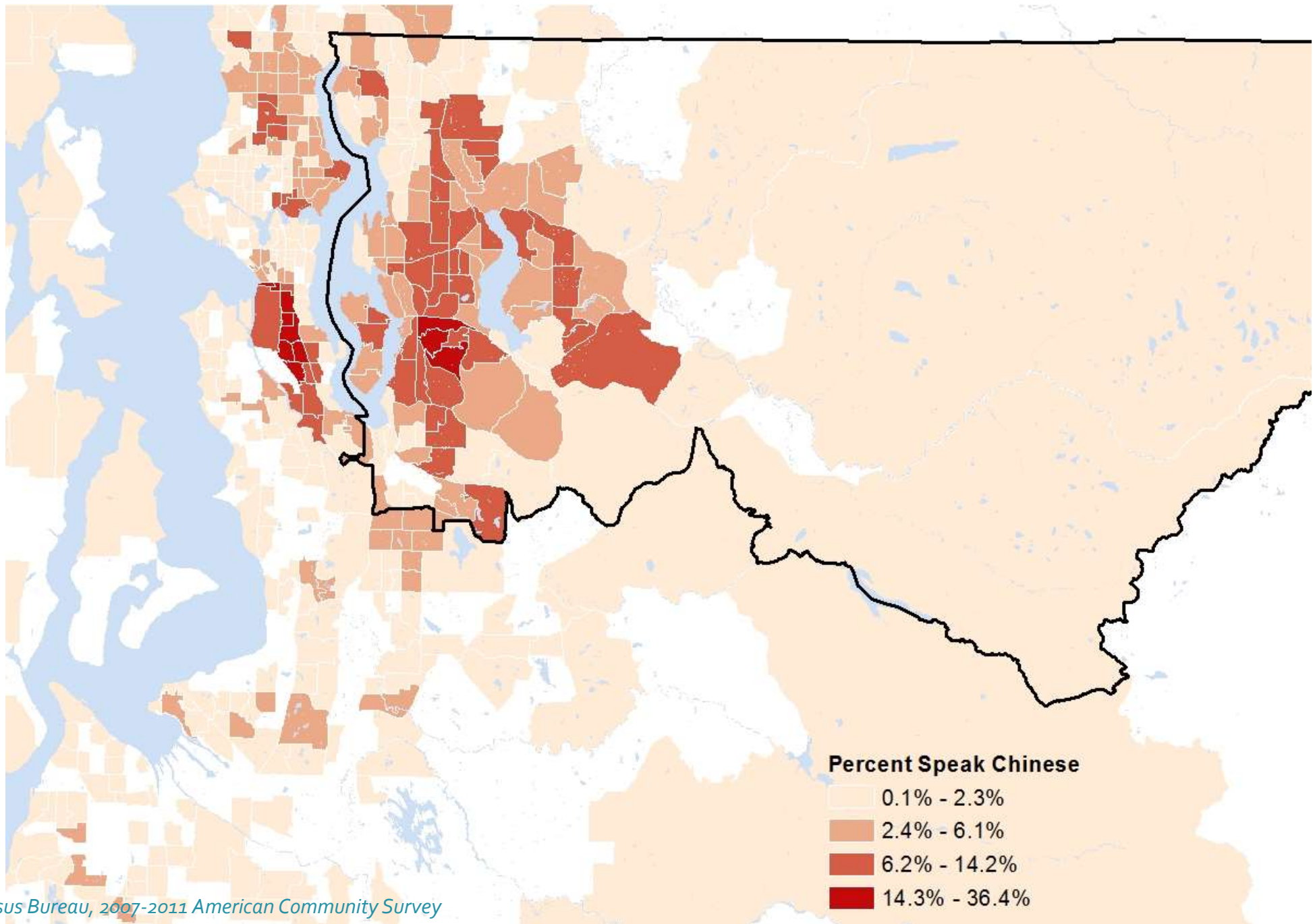
| Language                     | Eastside        |                                  | Speak English less than "very well" |  |
|------------------------------|-----------------|----------------------------------|-------------------------------------|--|
|                              | <i>Estimate</i> | <i>Percent of Pop 5 and Over</i> | <i>Estimate</i>                     | <i>Percent speaking specific lang.</i> |
| Spanish or Spanish Creole    | 33,812          | 5.3%                             | 15,530                              | 46%                                    |
| Chinese                      | 31,160          | 4.9%                             | 14,092                              | 45%                                    |
| Other Asian languages        | 13,202          | 2.1%                             | 3,096                               | 23%                                    |
| Russian                      | 8,874           | 1.4%                             | 3,727                               | 42%                                    |
| Hindi                        | 8,397           | 1.3%                             | 1,124                               | 13%                                    |
| Vietnamese                   | 7,990           | 1.3%                             | 4,767                               | 60%                                    |
| Korean                       | 7,862           | 1.2%                             | 4,253                               | 54%                                    |
| Tagalog                      | 6,119           | 1.0%                             | 2,064                               | 34%                                    |
| Japanese                     | 6,023           | 0.9%                             | 2,526                               | 42%                                    |
| French (incl. Patois, Cajun) | 4,901           | 0.8%                             | 630                                 | 13%                                    |
| Other Indic languages        | 4,752           | 0.7%                             | 1,260                               | 27%                                    |
| German                       | 4,081           | 0.6%                             | 445                                 | 11%                                    |

Source: U.S. Census Bureau, 2009-2013 American Community Survey

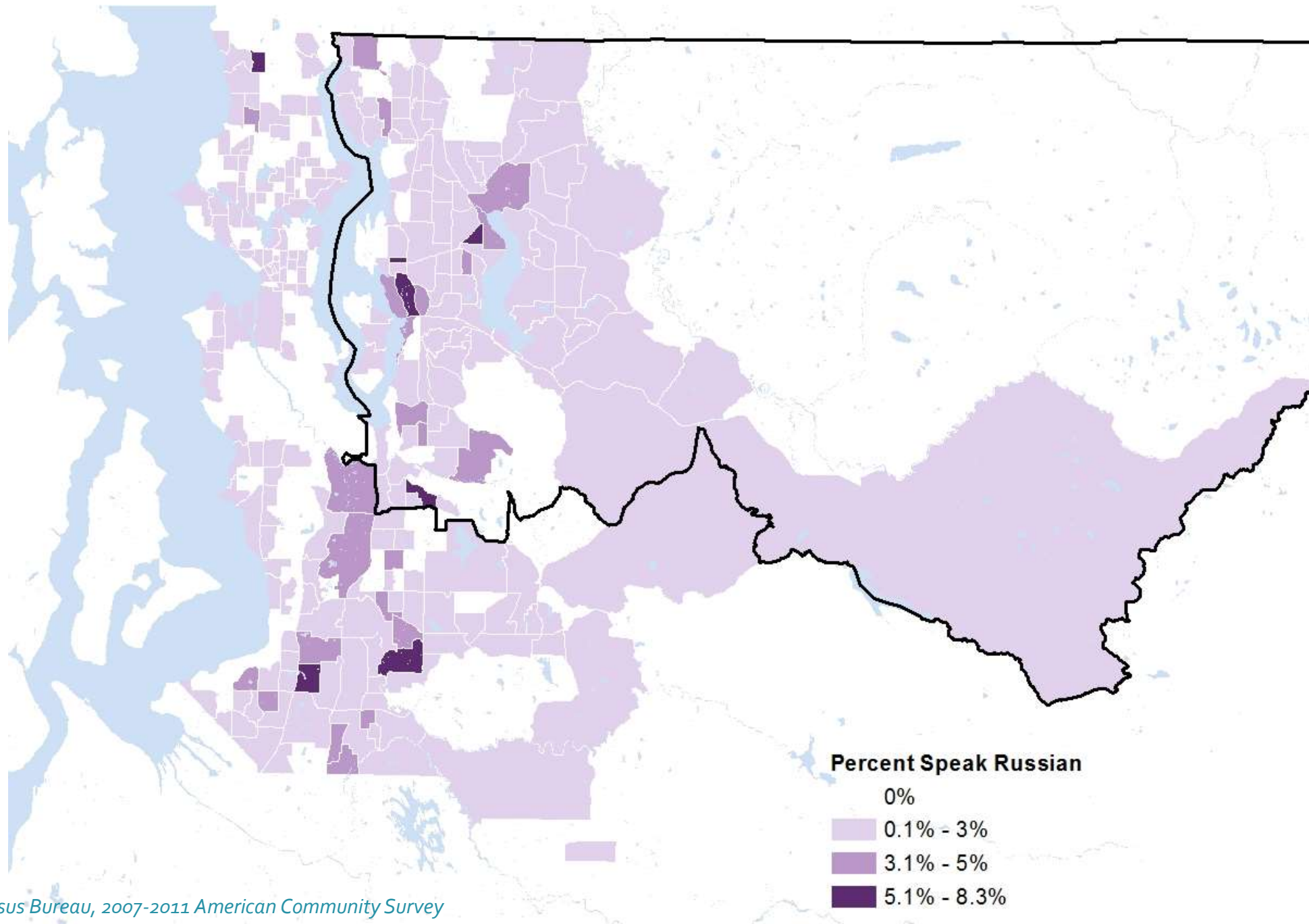




Source: U.S. Census Bureau, 2007-2011 American Community Survey



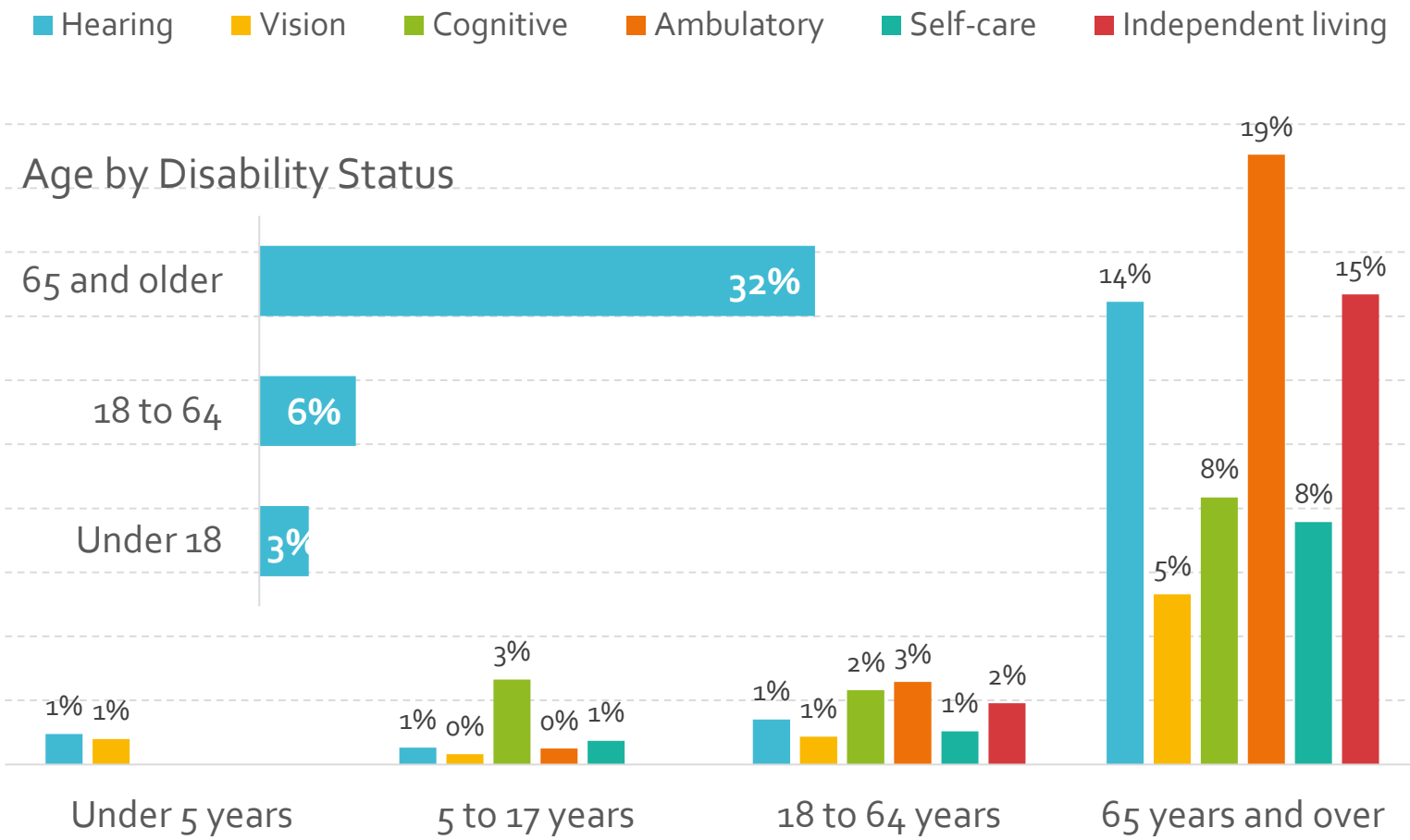
Source: U.S. Census Bureau, 2007-2011 American Community Survey



Source: U.S. Census Bureau, 2007-2011 American Community Survey

# Disability status and types

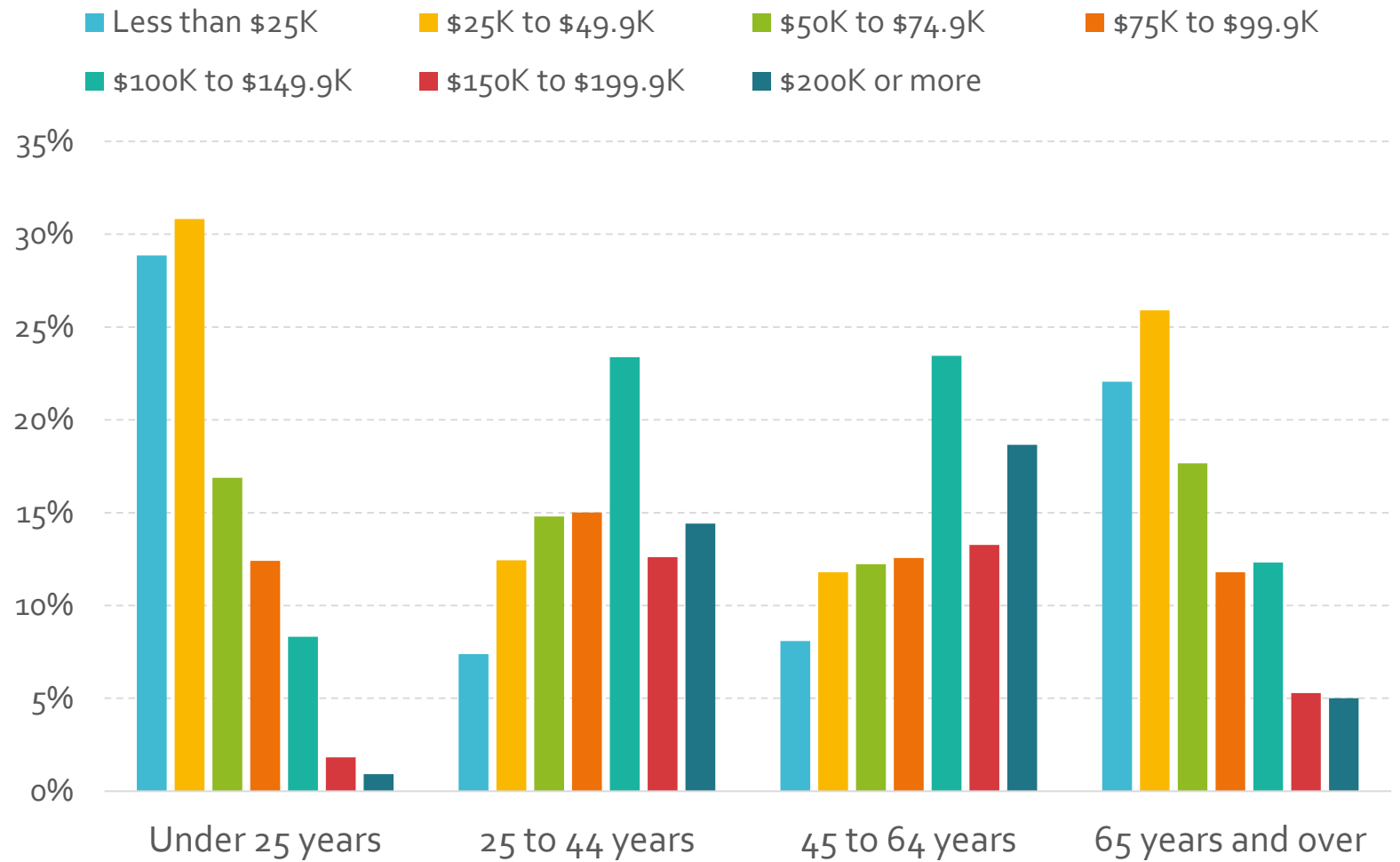
## Disability Type by Age on the Eastside



Source: U.S. Census Bureau, 2009-2013 American Community Survey

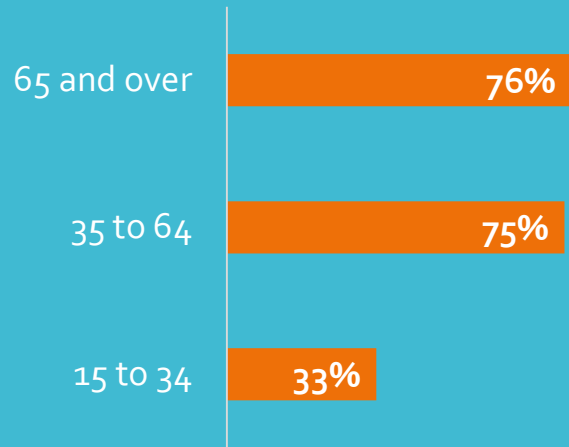
# Income Distribution

## Household Income Distribution by Age Cohort

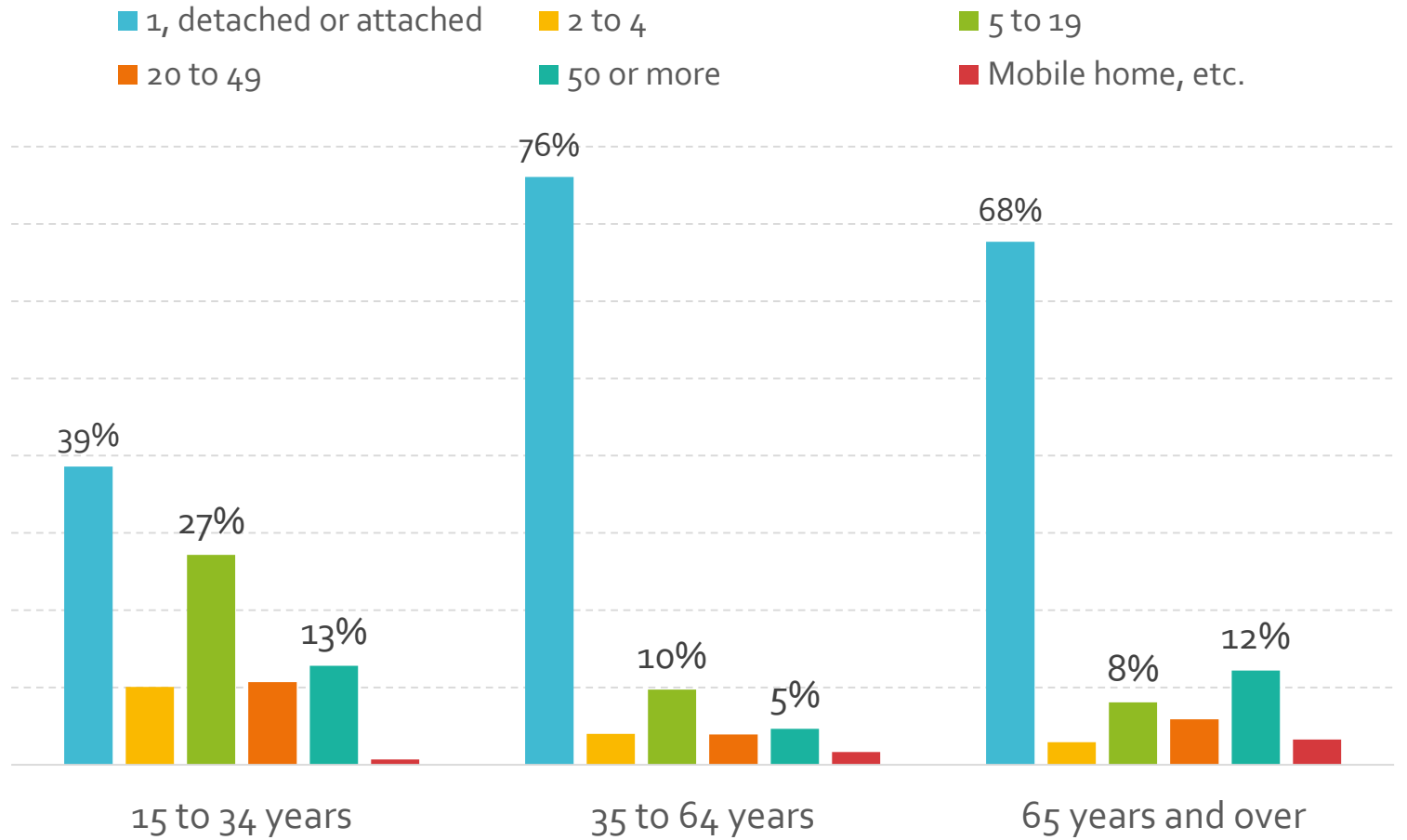


# Housing characteristics

## Housing Tenure by Age



## Structure Type Distribution by Age





# Growing Needs

Cultural competence

Support services

Affordable, accessible housing



Questions?

## For more information:

Gwen Rousseau, Associate Planner-Demographer

City of Bellevue Department of Planning and Community  
Development

(425) 452-2743

[grousseau@bellevuewa.gov](mailto:grousseau@bellevuewa.gov)

U.S. Census Bureau

<http://2010.census.gov/2010census/data/>

<http://factfinder2.census.gov/faces/nav/jsf/pages/index.xhtml>



# Disability Type Definitions

- **Hearing difficulty:** Deaf or having serious difficulty hearing.
- **Vision difficulty:** Blind or having serious difficulty seeing, even when wearing glasses.
- **Cognitive difficulty:** Because of a physical, mental, or emotional problem, having difficulty remembering, concentrating, or making decisions.
- **Ambulatory difficulty:** Having serious difficulty walking or climbing stairs.
- **Self-care difficulty:** Having difficulty bathing or dressing.
- **Independent living difficulty:** Because of a physical, mental, or emotional problem, having difficulty doing errands alone such as visiting a doctor's office or shopping.
- For more information see:  
<http://www.census.gov/people/disability/methodology/acs.html>